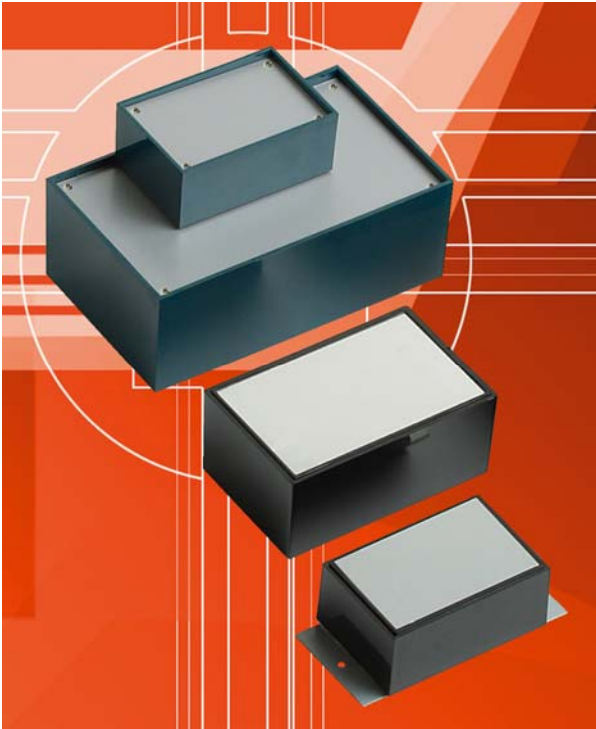


News Release

Release No: T2006.06

Universal, Low Cost 'OPTATIVE' Enclosures from TEKO



TEKO's 'OPTATIVE' enclosures are available in an extensive range of sizes and versions. These low cost universal enclosures have been designed for fast assembly of electronics and electrical components. Typical applications will include detection devices, system nodes, RF equipment, junction boxes, security electronics etc.

The 'OPTATIVE' enclosures are molded in ABS (UL 94 HB) in three standard colors: black, dark gray and petrol blue. Eight sizes are offered with external dimensions from 3.34" x 2.20" x 1.39" to 8.46" x 5.12" x 3.03". Internal guide rails are also provided for mounting PCBs and component assemblies.

Optional top panels are available to suit different applications: flat aluminum and polystyrene panels, flanged aluminum panels with fixing holes for wall mounting, and

molded panels with a recessed area for membrane keypads or product labels. The top panel is fitted by four self-tapping screws supplied.

TEKO can supply the 'OPTATIVE' enclosures with additional holes for push-buttons, connectors and displays etc., plus silk-screen printed legends and logos, and RFI/EMI shielding. The cases can also be molded or painted in alternative colors. Standard prices start at \$2.

More information on these enclosures can be found on TEKO's website at:

www.tekoenclosures.com/optative

Release No: T2006.06 Ends (word count 202)

Contact: **Sean Bailey**

E-mail: seanb@okwenclosures.com