

HAND-HELD-BOXES

Handheld enclosures for measuring instruments

Tried and tested, simple and economic handheld plastic enclosures.

- designed for mounting digital or analog LCD display modules
- accessory acrylic windows protect the display modules and are easily fitted with the self-adhesive foils
- battery compartments for C, AA and 9 V cells
- snap-in battery compartment lids for quick battery replacement
- versions with/without switch cap (type P)
- raised front area on the bottom part to accommodate plugs
- tilt foot bar for ergonomic desktop applications
- top recess for mounting membrane keypads (types M, N)
- internal screw pillars for mounting PCBs



HAND-HELD-BOXES

Applications and Examples

- Useful range of handheld cases for mounting digital and analog instruments
- Ideal for housing measuring and control technology e.g. continuity checkers, volt meters, field intensity meters, digital thermometers, flow meters etc.



Dosemeter

View Customizing Options

What do you still need for your own very personal product? We can supply enclosures and tuning knobs with all necessary modifications for fitting your electronic components.

Customizing options for Hand-Held-Boxes



Machining



Lacquering



Printing



Laser marking



Decor foils



Special material



RFI/EMI shielding



Installation / Assembly
of accessories

HAND-HELD-BOXES

Select Versions



A9060007
 HAND-HELD-BOX P, Vers. I
 ABS (UL 94 HB)
 off-white RAL 9002
 5.71"x3.15"x1.44"



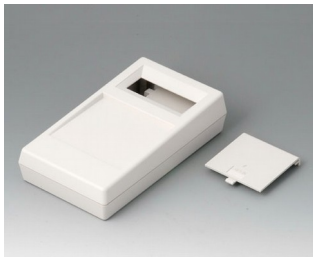
A9060009
 HAND-HELD-BOX P, Vers. I
 ABS (UL 94 HB)
 black RAL 9005
 5.71"x3.15"x1.44"



A9060017
 HAND-HELD-BOX P, Vers. II
 ABS (UL 94 HB)
 off-white RAL 9002
 5.71"x3.15"x1.44"



A9060019
 HAND-HELD-BOX P, Vers. II
 ABS (UL 94 HB)
 black RAL 9005
 5.71"x3.15"x1.44"



A9061017
 HAND-HELD-BOX N, Vers. I
 ABS (UL 94 HB)
 off-white RAL 9002
 7.09"x3.94"x1.73"



A9061019
 HAND-HELD-BOX N, Vers. I
 ABS (UL 94 HB)
 black RAL 9005
 7.09"x3.94"x1.73"



A9061117
 HAND-HELD-BOX N, Vers. II
 ABS (UL 94 HB)
 off-white RAL 9002
 7.09"x3.94"x1.73"



A9061119
 HAND-HELD-BOX N, Vers. II
 ABS (UL 94 HB)
 black RAL 9005
 7.09"x3.94"x1.73"



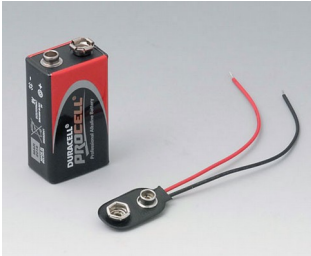
A9062017
 HAND-HELD-BOX M, Vers. I
 ABS (UL 94 HB)
 off-white RAL 9002
 5.71"x3.15"x1.52"



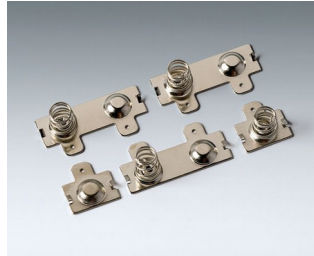
A9062019
 HAND-HELD-BOX M, Vers. I
 ABS (UL 94 HB)
 black RAL 9005
 5.71"x3.15"x1.52"

HAND-HELD-BOXES

Accessory "battery"



A9160003
 Plug-in contact, 1 x 9 V



A9190013
 Set of battery clips, 4 x AA
 Steel
 nickel-plated

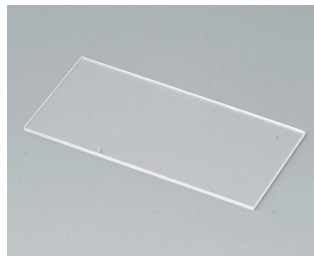


A9250250
 Battery spacer
 PE foam
 1.97"x0.98"x0.16"

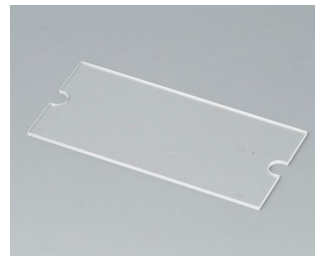
Accessory "protection"



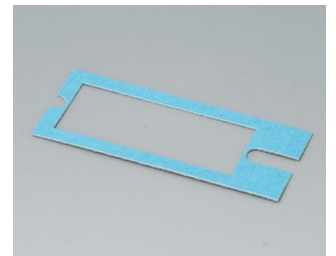
A9160002
 Cover plug
 black RAL 9005



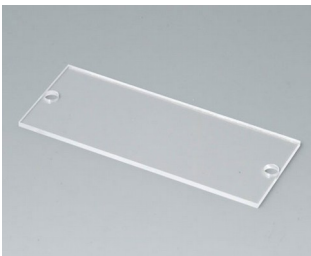
A9160004
 Display window P
 Acrylic glass
 transparent
 2.36"x1.18"x0.04"



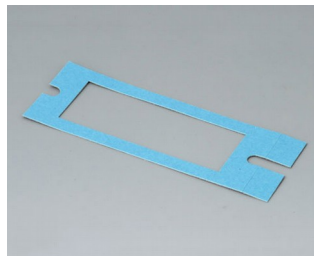
A9160005
 Display window M
 Acrylic glass
 transparent
 2.36"x1.18"x0.04"



A9160006
 Adhesive foil P/M



A9161004
 Display window N
 Acrylic glass
 transparent
 3.54"x1.42"x0.08"



A9161005
 Adhesive foil N

Accessory "carrying"



A9100002
 Ring eyelet
 PA 6
 volcano

HAND-HELD-BOXES

Accessory "screws"



A0305031
 Self-tapping screws 0.098" x
 0.236" (PZ1)



A0306031
 Self-tapping screws 0.118" x
 0.236" (PZ1)

Accessory



A9160007
 Switch cap
 ABS (UL 94 HB)
 off-white RAL 9002



A9160009
 Switch cap
 PA
 black RAL 9005



A9210290
 Anti-slide feet 0.374" x 0.150"
 transparent



A9250807
 Tilt foot bar
 ABS (UL 94 HB)
 off-white RAL 9002



A9250809
 Tilt foot bar
 ABS (UL 94 HB)
 black RAL 9005



A9250817
 Tilt foot bar
 ABS (UL 94 HB)
 off-white RAL 9002



A9250819
 Tilt foot bar
 ABS (UL 94 HB)
 black RAL 9005



A9361009
 Tilt foot bar
 Steel
 chromed

Subject to technical modification without notice. © by OKW Gehäusesysteme, Buchen/Germany.