

CARRYTEC

Plastic enclosures with integrated handle

CARRYTEC plastic enclosures are unique in offering a functional handle for many different tasks and situations, indoors and outdoors.

- integrated handle with soft insert for perfect, non-slip grip
- CARRYTEC M in a slim enclosure version for mounting tablets etc.
- handle located above the center of gravity for balanced carrying
- rear can be installed on a tripod or support arm systems for fast positioning and alignment of the viewing and operating panels, and orderly cable management
- especially large surface area that is ideal for user interfaces (S: 8.4"/21 cm; M: 10.4"/26 cm; L: 13.4"/34 cm)
- ample installation depth and plenty of room for interfaces, yet slim appearance
- interfaces are protected by inset areas on the underside
- secure storage on table stand and/or wall suspension element; easy transmission of data and charging current, contacts as accessories (except slim enclosure version)
- holding clamp for round tubes and rails according to DIN EN ISO 19054
- available molded in impact resistant plastic material, and darker colors, for tough/dirty conditions indoor or outdoor
- protection class IP 54 with sealing (accessory)
- recessed operating area for protecting the membrane keypad
- the enclosures are easy to clean
- a battery compartment for 5 x AA cells can be fitted (machining required)
- optional protection bags for carrying probes, sensors, cables etc. (sizes S and M)
- internal fastening pillars for PCBs



CARRYTEC

Applications and Examples

Unique variety of possible uses: mobile – desktop – wall mounted – rail mounted – round tube – tripod – suspension arm. Depending on the application (indoor/outdoor) this innovative enclosure is available in different materials, e.g. high-impact plastic material in darker colors for tough conditions. Medical, e.g. emergency systems, monitoring and alarm equipment. Diagnostics, therapy, laboratory devices. Test and measurement equipment. Communication technology. Mobile terminals, data collection units. Energy management systems. Sensors. Industry 4.0, smart factory. Machine building and construction equipment. Agricultural economics, forestry.



Air velocity meter



Battery filler for aviation batteries



Camera inspection



CNC Machine Monitoring



Diagnostic camera for illustrating the machine status



Hand held HD-camera and monitor system



Indoor Farming Monitoring



Mobile radio remote control unit for orbital welding system



Mobile testing device for cost-effective fault analysis



Monitoring system for cleaning nozzles



Multi-functional measuring instrument



Patient Simulation System



Portable receiver

View Customizing Options

What do you still need for your own very personal product? We can supply enclosures and tuning knobs with all necessary modifications for fitting your electronic components. Customizing options for Carrytec

CARRYTEC



Machining



Lacquering



Printing



Laser marking



Decor foils



RFI/EMI shielding



Installation / Assembly
of accessories

Select Versions



B4208107
CARRYTEC S
ABS (UL 94 HB)
off-white RAL 9002
8.74"x8.07"x3.15"
IP 54 opt.



B4208208
CARRYTEC S
ASA+PC (UL 94 V-0)
lava
8.74"x8.07"x3.15"
IP 54 opt.



B4210107
CARRYTEC M
ABS (UL 94 HB)
off-white RAL 9002
10.63"x9.72"x3.58"
IP 54 opt.



B4210127
CARRYTEC M slim version
ABS (UL 94 HB)
off-white RAL 9002
10.63"x9.72"x1.65"
IP 54 opt.



B4210208
CARRYTEC M
ASA+PC (UL 94 V-0)
lava
10.63"x9.72"x3.58"
IP 54 opt.



B4210228
CARRYTEC M slim version
ASA+PC (UL 94 V-0)
lava
10.63"x9.72"x1.65"
IP 54 opt.



B4213107
CARRYTEC L
ABS (UL 94 HB)
off-white RAL 9002
13.70"x11.93"x4.61"
IP 54 opt.



B4213208
CARRYTEC L
ASA+PC (UL 94 V-0)
lava
13.70"x11.93"x4.61"
IP 54 opt.

CARRYTEC



B4308117
Station S/M
ABS (UL 94 HB)
off-white RAL 9002



B4308218
Station S/M
ASA+PC (UL 94 V-0)
lava



B4308600
Carrying case S, right-hand side
gray
3.23"x7.09"x2.56"



B4308610
Carrying case S, left-hand side
gray
3.23"x7.09"x2.56"



B4310600
Carrying case M, right-hand side
gray
3.90"x8.43"x2.52"



B4310610
Carrying case M, left-hand side
gray
3.90"x8.43"x2.52"



B4313117
Station L
ABS (UL 94 HB)
off-white RAL 9002



B4313218
Station L
ASA+PC (UL 94 V-0)
lava

Accessory "battery"



A9338117
Battery compartment kit, 5 x AA
ABS (UL 94 HB)
off-white RAL 9002
3.66"x3.86"
IP 54



A9338218
Battery compartment kit, 5 x AA
ASA+PC (UL 94 V-0)
lava
3.66"x3.86"
IP 54

CARRYTEC

Accessory "station"



A9178007
Contacts, male
gold-plated



A9193044
Contacting kit, 6-pin
ABS (UL 94 HB)
black RAL 9005



B4308117
Station S/M
ABS (UL 94 HB)
off-white RAL 9002



B4308127
Base plate for station
ABS (UL 94 HB)
off-white RAL 9002



B4308218
Station S/M
ASA+PC (UL 94 V-0)
lava



B4308228
Base plate for station
ASA+PC (UL 94 V-0)
lava



B4313117
Station L
ABS (UL 94 HB)
off-white RAL 9002



B4313147
Adapter for Station L
ABS (UL 94 HB)
off-white RAL 9002



B4313218
Station L
ASA+PC (UL 94 V-0)
lava



B4313248
Adapter for Station L
ASA+PC (UL 94 V-0)
lava

Accessory "protection"



B4308001
Sealing S



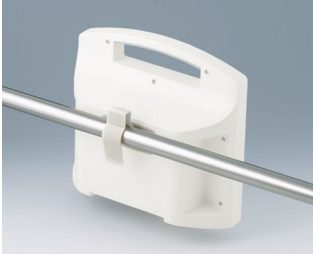
B4310001
Sealing M



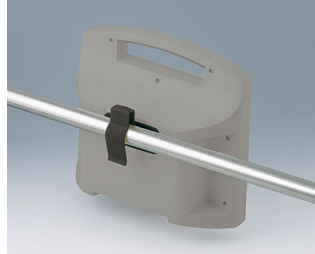
B4313001
Sealing L

CARRYTEC

Accessory "wall/holder"



B4308237
 Holding clamps
 PA 6
 off-white RAL 9002



B4308238
 Holding clamps
 PA 6
 lava

Accessory "carrying"



B4308600
 Carrying case S, right-hand side
 gray
 3.23"x7.09"x2.56"



B4308610
 Carrying case S, left-hand side
 gray
 3.23"x7.09"x2.56"



B4308650
 Shoulder strap
 gray
 55.12"



B4310600
 Carrying case M, right-hand side
 gray
 3.90"x8.43"x2.52"



B4310610
 Carrying case M, left-hand side
 gray
 3.90"x8.43"x2.52"

Accessory "screws"



A0325080
 Self-tapping screws 0.098" x
 0.315" (PZ1)

CARRYTEC

Accessory



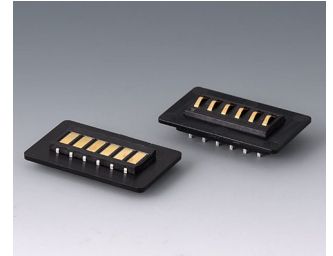
A9178007
Contacts, male
gold-plated



A9178008
Contacts, female
gold-plated



A9193042
Mounting plates for contacts
ABS (UL 94 HB)
black RAL 9005



A9193044
Contacting kit, 6-pin
ABS (UL 94 HB)
black RAL 9005

Subject to technical modification without notice. © by OKW Gehäusesysteme, Buchen/Germany.