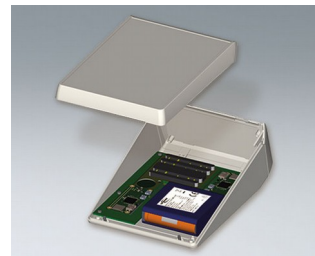
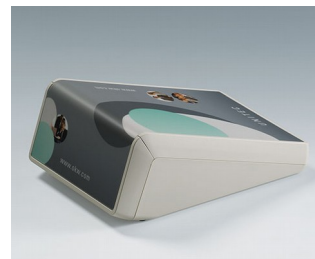
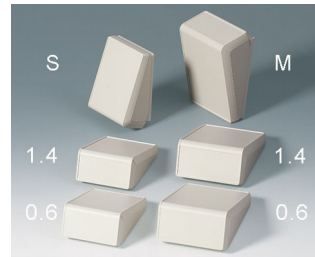


# UNITEC

## Dual face sloping front plastic enclosures

Our innovative UNITEC enclosures provide users with two operating panels at different inclinations, for face to face applications.

- generously dimensioned dialog areas inclined by 72° and 18° for face to face electronic devices; for example, user inputs data on the top and another person reads the displays/printouts on the front face
- highly attractive contoured design suitable for desktop and wall mounted applications
- two sizes, each with twelve versions
- recessed areas 0.024" (labels) or 0.055" (membrane keypads) deep on the front part and on the top part
- uniquely, it is possible to have an all over product label
- versions with battery compartment for 3 or 5 x AA cells
- flexible component mounting; PCBs can be positioned in the bottom, top and front parts; screw pillars integrated
- electronics and interfaces can be installed as complete packages, top and front part are at right angles to each other
- protection class IP 40
- hidden wall mounting in different orientations, separate wall suspension element (accessory)



# UNITEC

## Applications and Examples

- Data acquisition systems
- Access and information terminals
- Point-of-sales devices
- Building installations
- Data systems engineering
- Communication
- Analysis diagnostics and therapy applications
- Measuring and control
- Industrial regulation



Biosignal simulator



Foot care device



Time recording terminal



Ultrasonic measuring device

## View Customizing Options

What do you still need for your own very personal product? We can supply enclosures and tuning knobs with all necessary modifications for fitting your electronic components. Customizing options for Unitec



Machining



Lacquering



Printing



Laser marking



Decor foils



Special material



RF/EMI shielding



Installation / Assembly  
of accessories

# UNITEC

## Select Versions



**B4054107**  
UNITEC S, 0.02/0.02  
ABS (UL 94 HB)  
off-white RAL 9002  
4.92"x6.97"x2.72"  
IP 40



**B4054117**  
UNITEC S, 0.06/0.06  
ABS (UL 94 HB)  
off-white RAL 9002  
4.92"x6.97"x2.72"  
IP 40



**B4054127**  
UNITEC S, 0.06/0.02  
ABS (UL 94 HB)  
off-white RAL 9002  
4.92"x6.97"x2.72"  
IP 40



**B4054137**  
UNITEC S, 0.02/0.06  
ABS (UL 94 HB)  
off-white RAL 9002  
4.92"x6.97"x2.72"  
IP 40



**B4054207**  
UNITEC S, 0.02/0.02  
ABS (UL 94 HB)  
off-white RAL 9002  
4.92"x6.97"x2.72"  
IP 40



**B4054217**  
UNITEC S, 0.06/0.06  
ABS (UL 94 HB)  
off-white RAL 9002  
4.92"x6.97"x2.72"  
IP 40



**B4054227**  
UNITEC S, 0.06/0.02  
ABS (UL 94 HB)  
off-white RAL 9002  
4.92"x6.97"x2.72"  
IP 40



**B4054237**  
UNITEC S, 0.02/0.06  
ABS (UL 94 HB)  
off-white RAL 9002  
4.92"x6.97"x2.72"  
IP 40



**B4054307**  
UNITEC S, 0.02/0.02  
ABS (UL 94 HB)  
off-white RAL 9002  
4.92"x6.97"x2.72"  
IP 40



**B4054317**  
UNITEC S, 0.06/0.06  
ABS (UL 94 HB)  
off-white RAL 9002  
4.92"x6.97"x2.72"  
IP 40



**B4054327**  
UNITEC S, 0.06/0.02  
ABS (UL 94 HB)  
off-white RAL 9002  
4.92"x6.97"x2.72"  
IP 40



**B4054337**  
UNITEC S, 0.02/0.06  
ABS (UL 94 HB)  
off-white RAL 9002  
4.92"x6.97"x2.72"  
IP 40



**B4056107**  
UNITEC M, 0.02/0.02  
ABS (UL 94 HB)  
off-white RAL 9002  
5.83"x8.27"x3.15"  
IP 40



**B4056117**  
UNITEC M, 0.06/0.06  
ABS (UL 94 HB)  
off-white RAL 9002  
5.83"x8.27"x3.15"  
IP 40



**B4056127**  
UNITEC M, 0.06/0.02  
ABS (UL 94 HB)  
off-white RAL 9002  
5.83"x8.27"x3.15"  
IP 40



**B4056137**  
UNITEC M, 0.02/0.06  
ABS (UL 94 HB)  
off-white RAL 9002  
5.83"x8.27"x3.15"  
IP 40

# UNITEC



**B4056207**  
UNITEC M, 0.02/0.02  
ABS (UL 94 HB)  
off-white RAL 9002  
5.83"x8.27"x3.15"  
IP 40



**B4056217**  
UNITEC M, 0.06/0.06  
ABS (UL 94 HB)  
off-white RAL 9002  
5.83"x8.27"x3.15"  
IP 40



**B4056227**  
UNITEC M, 0.06/0.02  
ABS (UL 94 HB)  
off-white RAL 9002  
5.83"x8.27"x3.15"  
IP 40



**B4056237**  
UNITEC M, 0.02/0.06  
ABS (UL 94 HB)  
off-white RAL 9002  
5.83"x8.27"x3.15"  
IP 40



**B4056307**  
UNITEC M, 0.02/0.02  
ABS (UL 94 HB)  
off-white RAL 9002  
5.83"x8.27"x3.15"  
IP 40



**B4056317**  
UNITEC M, 0.06/0.06  
ABS (UL 94 HB)  
off-white RAL 9002  
5.83"x8.27"x3.15"  
IP 40



**B4056327**  
UNITEC M, 0.06/0.02  
ABS (UL 94 HB)  
off-white RAL 9002  
5.83"x8.27"x3.15"  
IP 40



**B4056337**  
UNITEC M, 0.02/0.06  
ABS (UL 94 HB)  
off-white RAL 9002  
5.83"x8.27"x3.15"  
IP 40

## Accessory "wall/holder"



**B4154307**  
Wall suspension element S  
off-white RAL 9002



**B4156307**  
Wall suspension element M  
off-white RAL 9002

## Accessory "screws"



**A0306031**  
Self-tapping screws 0.118" x  
0.236" (PZ1)

# UNITEC

## Accessory



A9212330  
Anti-slide feet 0.472" x 0.138"  
transparent

Subject to technical modification without notice. © by OKW Gehäusesysteme, Buchen/Germany.