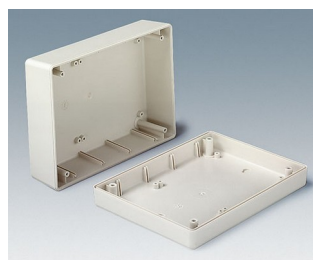
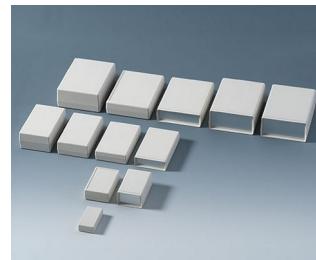


# SHELL-TYPE CASES

## Universal instrument enclosures

Our comprehensive SHELL-TYPE CASE range of plastic enclosures is available in different sizes, heights and types. Simply choose the case that meets your individual requirements!

- fifty one models in three different types:
  - type V** – with open front for a panel (acc.)
  - type O** – with open front and rear for panels (acc.)
  - type G** – with closed front and rear
- robust construction with tongue and groove
- internal guide ridges for vertical mounting of partitions and PCBs
- internal screw pillars for PCBs etc.
- front and rear panels in aluminum or PMMA red (acrylic glass) available as accessories
- versions with battery compartment for 2 x AA, 4 x AA, 1 x 9 V or 2 x 9 V cells (types V and G)
- closed version (type G) also available with recessed top
- protection class IP 65 for closed versions (type G) without battery compartment when using the sealing kit (accessory)
- EMC: on request the SHELL-TYPE CASES are also available with aluminum metalisation; aluminum contact strips (accessories) provide additional electrical continuity between the top and base shells of the shielded cases
- wall mounting brackets and wall suspension elements as accessories
- additional functions with universal accessories



# SHELL-TYPE CASES

## Applications and Examples

Measuring and control technology, medical, wellness and laboratory technology, peripheral devices and interfaces, switchboxes etc.



Magnetic metal detector



System for leak detection in leisure vehicles



Teleservice Gateway MGW/865

## View Customizing Options

What do you still need for your own very personal product? We can supply enclosures and tuning knobs with all necessary modifications for fitting your electronic components.

Customizing options for Shell-Type Cases



Machining



Lacquering



Printing



Laser marking



Decor foils



Special material



RFI/EMI shielding



Installation / Assembly of accessories

# SHELL-TYPE CASES

## Select Versions



**A9404331**  
SHELL-TYPE CASES G 85,  
Vers. I  
ABS (UL 94 HB)  
off-white RAL 9002  
1.77"x3.35"x0.87"  
IP 65 opt.



**A9404333**  
SHELL-TYPE CASES V 85,  
Vers. I  
ABS (UL 94 HB)  
off-white RAL 9002  
1.77"x3.35"x0.87"



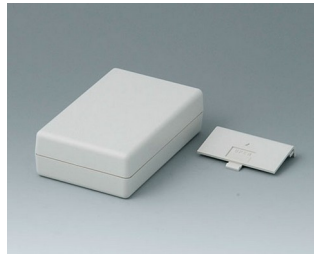
**A9404341**  
SHELL-TYPE CASES G 85,  
Vers. I  
ABS (UL 94 HB)  
off-white RAL 9002  
1.77"x3.35"x1.30"  
IP 65 opt.



**A9404441**  
SHELL-TYPE CASES G 85,  
Vers. I  
ABS (UL 94 HB)  
off-white RAL 9002  
1.77"x3.35"x1.77"  
IP 65 opt.



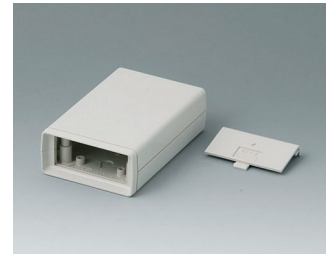
**A9406331**  
SHELL-TYPE CASES G 110,  
Vers. I  
ABS (UL 94 HB)  
off-white RAL 9002  
2.83"x4.49"x1.30"  
IP 65 opt.



**A9406332**  
SHELL-TYPE CASES G 110,  
Vers. II  
ABS (UL 94 HB)  
off-white RAL 9002  
2.83"x4.49"x1.30"



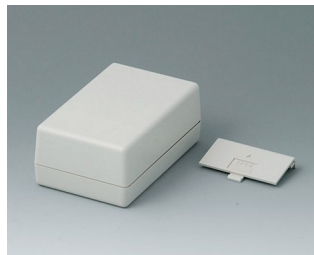
**A9406333**  
SHELL-TYPE CASES V 110,  
Vers. I  
ABS (UL 94 HB)  
off-white RAL 9002  
2.83"x4.49"x1.30"



**A9406334**  
SHELL-TYPE CASES V 110,  
Vers. II  
ABS (UL 94 HB)  
off-white RAL 9002  
2.83"x4.49"x1.30"



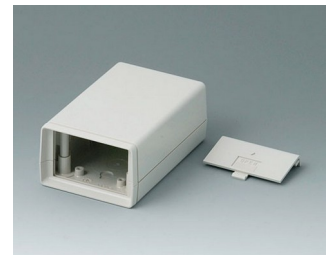
**A9406341**  
SHELL-TYPE CASES G 110,  
Vers. I  
ABS (UL 94 HB)  
off-white RAL 9002  
2.83"x4.49"x1.77"  
IP 65 opt.



**A9406342**  
SHELL-TYPE CASES G 110,  
Vers. II  
ABS (UL 94 HB)  
off-white RAL 9002  
2.83"x4.49"x1.77"



**A9406343**  
SHELL-TYPE CASES V 110,  
Vers. I  
ABS (UL 94 HB)  
off-white RAL 9002  
2.83"x4.49"x1.77"

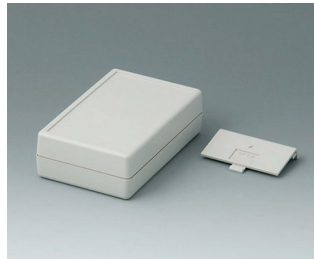


**A9406344**  
SHELL-TYPE CASES V 110,  
Vers. II  
ABS (UL 94 HB)  
off-white RAL 9002  
2.83"x4.49"x1.77"

# SHELL-TYPE CASES



**A9406351**  
SHELL-TYPE CASES G 110,  
Vers. I  
ABS (UL 94 HB)  
off-white RAL 9002  
2.83"x4.49"x1.32"  
IP 65 opt.



**A9406352**  
SHELL-TYPE CASES G 110,  
Vers. II  
ABS (UL 94 HB)  
off-white RAL 9002  
2.83"x4.49"x1.32"



**A9406441**  
SHELL-TYPE CASES G 110,  
Vers. I  
ABS (UL 94 HB)  
off-white RAL 9002  
2.83"x4.49"x2.24"  
IP 65 opt.



**A9406443**  
SHELL-TYPE CASES V 110,  
Vers. I  
ABS (UL 94 HB)  
off-white RAL 9002  
2.83"x4.49"x2.24"



**A9408330**  
SHELL-TYPE CASES O 155,  
Vers. I  
ABS (UL 94 HB)  
off-white RAL 9002  
3.74"x6.22"x1.30"



**A9408331**  
SHELL-TYPE CASES G 155,  
Vers. I  
ABS (UL 94 HB)  
off-white RAL 9002  
3.74"x6.22"x1.30"  
IP 65 opt.



**A9408333**  
SHELL-TYPE CASES V 155,  
Vers. I  
ABS (UL 94 HB)  
off-white RAL 9002  
3.74"x6.22"x1.30"



**A9408335**  
SHELL-TYPE CASES G 155,  
Vers. IV  
ABS (UL 94 HB)  
off-white RAL 9002  
3.74"x6.22"x1.30"



**A9408336**  
SHELL-TYPE CASES V 155,  
Vers. IV  
ABS (UL 94 HB)  
off-white RAL 9002  
3.74"x6.22"x1.30"



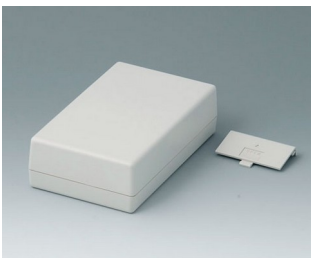
**A9408340**  
SHELL-TYPE CASES O 155,  
Vers. I  
ABS (UL 94 HB)  
off-white RAL 9002  
3.74"x6.22"x1.77"



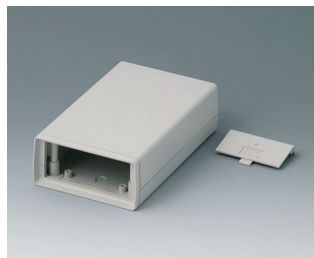
**A9408341**  
SHELL-TYPE CASES G 155,  
Vers. I  
ABS (UL 94 HB)  
off-white RAL 9002  
3.74"x6.22"x1.77"  
IP 65 opt.



**A9408343**  
SHELL-TYPE CASES V 155,  
Vers. I  
ABS (UL 94 HB)  
off-white RAL 9002  
3.74"x6.22"x1.77"



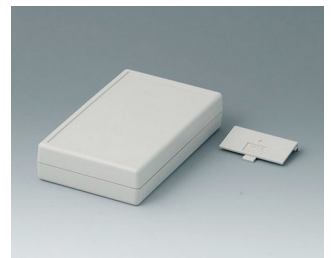
**A9408345**  
SHELL-TYPE CASES G 155,  
Vers. IV  
ABS (UL 94 HB)  
off-white RAL 9002  
3.74"x6.22"x1.77"



**A9408346**  
SHELL-TYPE CASES V 155,  
Vers. IV  
ABS (UL 94 HB)  
off-white RAL 9002  
3.74"x6.22"x1.77"



**A9408351**  
SHELL-TYPE CASES G 155,  
Vers. I  
ABS (UL 94 HB)  
off-white RAL 9002  
3.74"x6.22"x1.32"  
IP 65 opt.



**A9408355**  
SHELL-TYPE CASES G 155,  
Vers. IV  
ABS (UL 94 HB)  
off-white RAL 9002  
3.74"x6.22"x1.32"

# SHELL-TYPE CASES



**A9408440**  
SHELL-TYPE CASES O 155,  
Vers. I  
ABS (UL 94 HB)  
off-white RAL 9002  
3.74"x6.10"x2.24"



**A9408441**  
SHELL-TYPE CASES G 155,  
Vers. I  
ABS (UL 94 HB)  
off-white RAL 9002  
3.74"x6.22"x2.24"  
IP 65 opt.



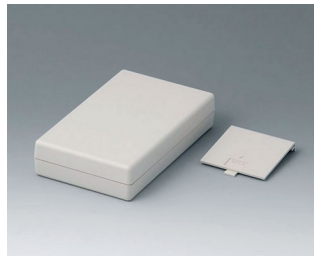
**A9408443**  
SHELL-TYPE CASES V 155,  
Vers. I  
ABS (UL 94 HB)  
off-white RAL 9002  
3.74"x6.22"x2.24"



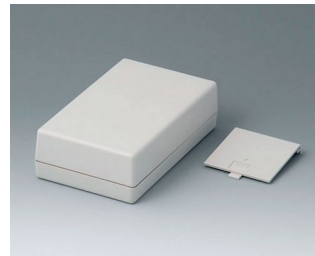
**A9408638**  
SHELL-TYPE CASES V 155,  
Vers. V  
ABS (UL 94 HB)  
off-white RAL 9002  
3.74"x6.22"x1.30"



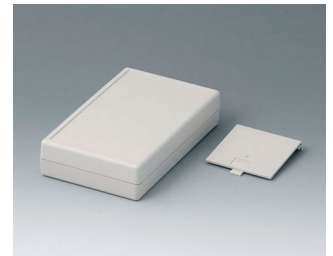
**A9408648**  
SHELL-TYPE CASES V 155,  
Vers. V  
ABS (UL 94 HB)  
off-white RAL 9002  
3.74"x6.22"x1.77"



**A9408737**  
SHELL-TYPE CASES G 155,  
Vers. V  
ABS (UL 94 HB)  
off-white RAL 9002  
3.74"x6.22"x1.30"



**A9408747**  
SHELL-TYPE CASES G 155,  
Vers. V  
ABS (UL 94 HB)  
off-white RAL 9002  
3.74"x6.22"x1.77"



**A9408757**  
SHELL-TYPE CASES G 155,  
Vers. V  
ABS (UL 94 HB)  
off-white RAL 9002  
3.74"x6.22"x1.32"



**A9413330**  
SHELL-TYPE CASES O 190,  
Vers. I  
ABS (UL 94 HB)  
off-white RAL 9002  
5.43"x7.48"x1.77"



**A9413331**  
SHELL-TYPE CASES G 190,  
Vers. I  
ABS (UL 94 HB)  
off-white RAL 9002  
5.43"x7.48"x1.77"  
IP 65 opt.



**A9413333**  
SHELL-TYPE CASES V 190,  
Vers. I  
ABS (UL 94 HB)  
off-white RAL 9002  
5.43"x7.48"x1.77"



**A9413340**  
SHELL-TYPE CASES O 190,  
Vers. I  
ABS (UL 94 HB)  
off-white RAL 9002  
5.43"x7.48"x2.68"



**A9413341**  
SHELL-TYPE CASES G 190,  
Vers. I  
ABS (UL 94 HB)  
off-white RAL 9002  
5.43"x7.48"x2.68"  
IP 65 opt.



**A9413343**  
SHELL-TYPE CASES V 190,  
Vers. I  
ABS (UL 94 HB)  
off-white RAL 9002  
5.43"x7.48"x2.68"



**A9413351**  
SHELL-TYPE CASES G 190,  
Vers. I  
ABS (UL 94 HB)  
off-white RAL 9002  
5.43"x7.48"x1.79"  
IP 65 opt.



**A9413440**  
SHELL-TYPE CASES O 190,  
Vers. I  
ABS (UL 94 HB)  
off-white RAL 9002  
5.43"x7.48"x3.58"

# SHELL-TYPE CASES



**A9413441**  
SHELL-TYPE CASES G 190,  
Vers. I  
ABS (UL 94 HB)  
off-white RAL 9002  
5.43"x7.48"x3.58"  
IP 65 opt.



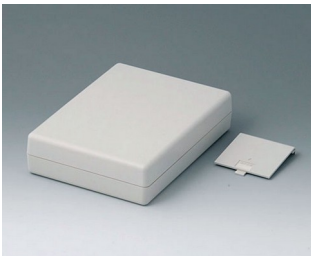
**A9413443**  
SHELL-TYPE CASES V 190,  
Vers. I  
ABS (UL 94 HB)  
off-white RAL 9002  
5.43"x7.48"x3.58"



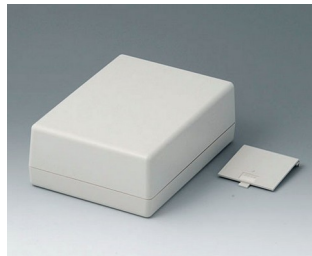
**A9413638**  
SHELL-TYPE CASES V 190,  
Vers. V  
ABS (UL 94 HB)  
off-white RAL 9002  
5.43"x7.48"x1.77"



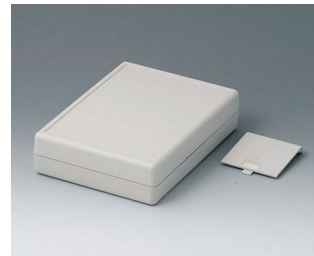
**A9413648**  
SHELL-TYPE CASES V 190,  
Vers. V  
ABS (UL 94 HB)  
off-white RAL 9002  
5.43"x7.48"x2.68"



**A9413737**  
SHELL-TYPE CASES G 190,  
Vers. V  
ABS (UL 94 HB)  
off-white RAL 9002  
5.43"x7.48"x1.77"

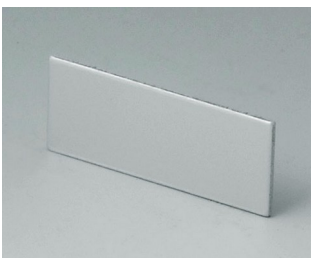


**A9413747**  
SHELL-TYPE CASES G 190,  
Vers. V  
ABS (UL 94 HB)  
off-white RAL 9002  
5.43"x7.48"x2.68"

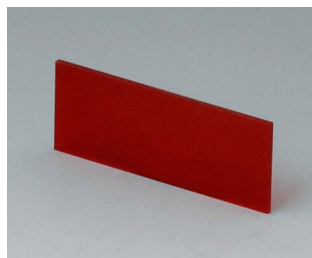


**A9413757**  
SHELL-TYPE CASES G 190,  
Vers. V  
ABS (UL 94 HB)  
off-white RAL 9002  
5.43"x7.48"x1.79"

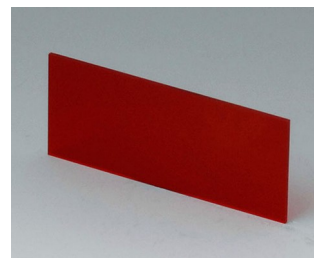
## Accessory to complete



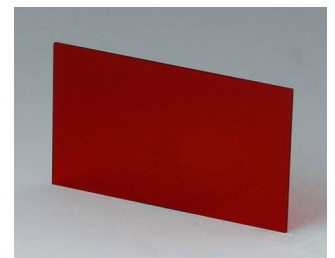
**A9104111**  
Front / rear panel V 85  
Aluminum  
matt anodized  
1.42"x0.57"x0.04"



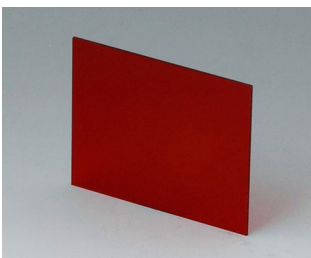
**A9104113**  
Front / rear panel V 85  
Acrylic glass  
red transparent  
1.42"x0.57"x0.04"



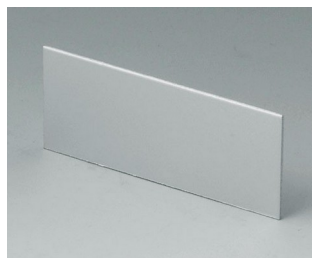
**A9106113**  
Front / rear panel V 110  
Acrylic glass  
red transparent  
2.33"x0.98"x0.04"



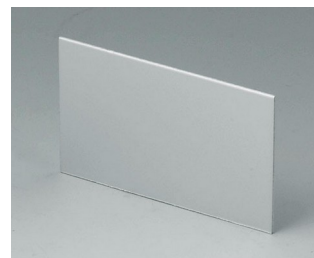
**A9106123**  
Front / rear panel V 110  
Acrylic glass  
red transparent  
2.33"x1.46"x0.04"



**A9106223**  
Front / rear panel V 110  
Acrylic glass  
red transparent  
2.33"x1.93"x0.04"



**A9107111**  
Front / rear panel V 110  
Aluminum  
matt anodized  
2.33"x0.98"x0.04"



**A9107121**  
Front / rear panel V 110  
Aluminum  
matt anodized  
2.33"x1.46"x0.04"



**A9107221**  
Front / rear panel V 110  
Aluminum  
matt anodized  
2.33"x1.93"x0.04"

# SHELL-TYPE CASES



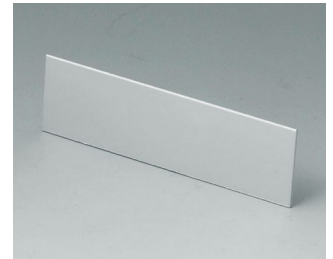
**A9108113**  
Front / rear panel V, O 155  
Acrylic glass  
red transparent  
3.22"x0.93"x0.04"



**A9108123**  
Front / rear panel V, O 155  
Acrylic glass  
red transparent  
3.22"x1.40"x0.04"



**A9108223**  
Front / rear panel V, O 155  
Acrylic glass  
red transparent  
3.22"x1.87"x0.04"



**A9109111**  
Front / rear panel V, O 155  
Aluminum  
matt anodized  
3.22"x0.93"x0.04"



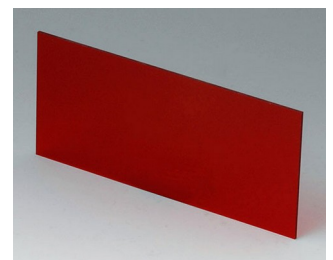
**A9109121**  
Front / rear panel V, O 155  
Aluminum  
matt anodized  
3.22"x1.40"x0.04"



**A9109221**  
Front / rear panel V, O 155  
Aluminum  
matt anodized  
3.22"x1.87"x0.04"



**A9113113**  
Front / rear panel V, O 190  
Acrylic glass  
red transparent  
4.89"x1.32"x0.06"



**A9113123**  
Front / rear panel V, O 190  
Acrylic glass  
red transparent  
4.89"x2.23"x0.06"



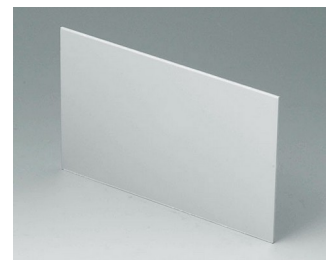
**A9113223**  
Front / rear panel V, O 190  
Acrylic glass  
red transparent  
4.89"x3.13"x0.06"



**A9114111**  
Front / rear panel V, O 190  
Aluminum  
matt anodized  
4.89"x1.32"x0.06"



**A9114121**  
Front / rear panel V, O 190  
Aluminum  
matt anodized  
4.89"x2.23"x0.06"



**A9114221**  
Front / rear panel V, O 190  
Aluminum  
matt anodized  
4.89"x3.13"x0.06"

## Accessory "battery"



**A9160003**  
Plug-in contact, 1 x 9 V



**A9190013**  
Set of battery clips, 4 x AA  
Steel  
nickel-plated



**A9190014**  
Set of battery clips, 2 x AA  
Steel  
nickel-plated



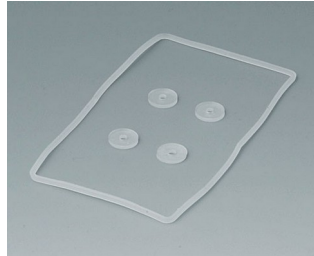
**A9250250**  
Battery spacer  
PE foam  
1.97"x0.98"x0.16"

# SHELL-TYPE CASES

## Accessory "protection"



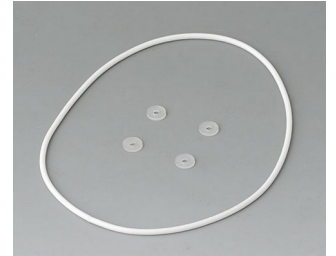
**A9104073**  
 Contact-strips V, G 85  
 Aluminum



**A9104250**  
 Sealing kit G 85



**A9106095**  
 Contact-strips V, G 110  
 Aluminum



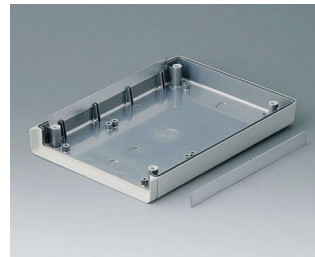
**A9106352**  
 Sealing kit G 110



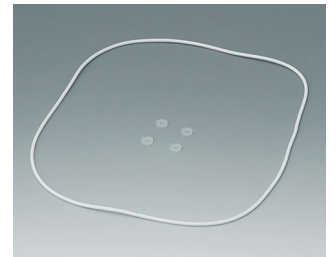
**A9108120**  
 Contact-strips V, O, G 155  
 Aluminum



**A9108486**  
 Sealing kit G 155



**A9113150**  
 Contact-strips V, O, G 190  
 Aluminum



**A9113630**  
 Sealing kit G 190

## Accessory "wall/holder"



**A9204108**  
 Wall mounting brackets  
 PA 6  
 pebble gray RAL 7032



**B1350048**  
 Wall suspension elements  
 ABS (UL 94 HB)  
 pebble gray RAL 7032



**B1360048**  
 Wall suspension elements  
 ABS (UL 94 HB)  
 pebble gray RAL 7032

## Accessory "carrying"



**A9100001**  
 Ring eyelet  
 PA 6  
 volcano



**A9100002**  
 Ring eyelet  
 PA 6  
 volcano



**A9172107**  
 Belt/Pocket clip  
 ABS (UL 94 HB)  
 off-white RAL 9002  
 2.44"x1.18"

# SHELL-TYPE CASES

## Accessory "screws"



**A0306031**  
Self-tapping screws 0.118" x  
0.236" (PZ1)

## Accessory



**A9207150**  
Anti-slide feet 0.256" x 0.079"  
transparent



**A9210290**  
Anti-slide feet 0.374" x 0.150"  
transparent



**A9250807**  
Tilt foot bar  
ABS (UL 94 HB)  
off-white RAL 9002



**A9250817**  
Tilt foot bar  
ABS (UL 94 HB)  
off-white RAL 9002

Subject to technical modification without notice. © by OKW Gehäusesysteme, Buchen/Germany.