

RAILTEC B

Versatile standard DIN rail enclosures

Our RAILTEC B series of plastic enclosures provides fast and simple mounting on to standard DIN EN 60715 TH35 rails.

- six sizes (2 to 12 modules wide) according to DIN 43880, unit 1;
four sizes (2, 4, 6 & 9 modules wide) with low profile, 2 versions;
four sizes (2, 4, 6 & 9 modules wide) with flat/high connection level
- fully insulated and protected according to VBG 4 and IEC 529/DIN VDE 0470-1
- flame-resistant material (UL 94 V-0)
- **version I and XI:** for PCB terminal blocks 5.0/5.08 mm pitch
- **version II and XII:** for plug headers 5.0/5.08 mm pitch
- **version III and XIII:** closed case for front connectors, D-SUB connectors, etc.
- **version IV:** for PCB terminal blocks 5.0/5.08 mm pitch (1 row)
- **version V:** with knockout perforations 5.0 mm pitch
- **version VI:** open case for fitting different combinations of terminal guards and partition plate; optionally 1 or 2 connection levels
- KNX cover to fit 2 and 4 modules of series VI and flat top parts
- suitable for DIN rails EN 60715 TH35 or direct wall mounting
- with/without ventilation slots for good heat dissipation
- flexible assembly: PCB positioning in all 3 directions; base part with fixing pillars, top parts with guide ridges
- DIN rail clip pre-assembled in base part
- transparent lid (acc.) protects display and operation elements
- protection class < IP 40
- **NEW:** RAILTEC BP, M22 – Panel version with pluggable side panels and front panel. Simple and quick assembly and fast mounting onto DIN rails EN 60715 TH35. Optional hinged transparent cover (accessory).



RAILTEC B

Applications and Examples

Universal use as installation case. Corresponding to the regulations of the machine-building and motorcar industry. Smart Factory / Industry 4.0. Especially for the control equipment for example lighting systems.



CAN BUS system module for packaging machines



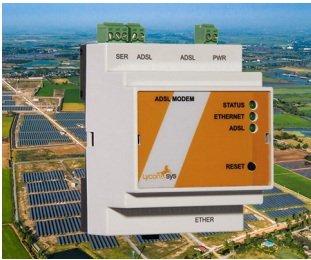
Earthfault detection and short-circuit indicator



Energy management in data centers



Industrial Gateways



Industrial VDSL2/ADSL2 modems



Monitoring of electrical variables



Power measuring device for energy analysis



Remote meter for condition monitoring



Smart meter for electricity consumption



Water level detector

View Customizing Options

What do you still need for your own very personal product? We can supply enclosures and tuning knobs with all necessary modifications for fitting your electronic components. Customizing options for Railtec B

RAILTEC B



Machining



Lacquering



Printing



Laser marking



Decor foils



Installation / Assembly
of accessories

Select Versions



B6501110
RAILTEC B, 2 modules, Vers. V
PC (UL 94 V-0)
light gray RAL 7035
1.38"x3.39"x2.28"



B6501111
RAILTEC B, 2 modules, Vers. I
PC (UL 94 V-0)
light gray RAL 7035
1.38"x3.39"x2.28"



B6501112
RAILTEC B, 2 modules, Vers. II
PC (UL 94 V-0)
light gray RAL 7035
1.38"x3.39"x2.28"



B6501113
RAILTEC B, 2 modules, Vers. III
PC (UL 94 V-0)
light gray RAL 7035
1.38"x3.39"x2.28"



B6501114
RAILTEC B, 2 modules, Vers. I
PC (UL 94 V-0)
light gray RAL 7035
1.38"x3.39"x2.28"



B6501115
RAILTEC B, 2 modules, Vers. II
PC (UL 94 V-0)
light gray RAL 7035
1.38"x3.39"x2.28"



B6501116
RAILTEC B, 2 modules, Vers. III
PC (UL 94 V-0)
light gray RAL 7035
1.38"x3.39"x2.28"



B6501117
RAILTEC B, 2 modules, Vers. IV
PC (UL 94 V-0)
light gray RAL 7035
1.38"x3.39"x2.28"

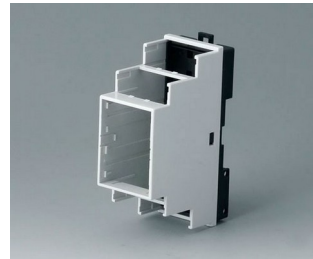
RAILTEC B



B6501118
 RAILTEC B, 2 modules, Vers. IV
 PC (UL 94 V-0)
 light gray RAL 7035
 1.38"x3.39"x2.28"



B6501119
 RAILTEC B, 2 modules, Vers. V
 PC (UL 94 V-0)
 light gray RAL 7035
 1.38"x3.39"x2.28"



B6501121
 RAILTEC B, 2 modules, Vers. VI
 PC (UL 94 V-0)
 light gray RAL 7035
 1.38"x3.54"x2.28"



B6501223
 RAILTEC B, 2 modules, Vers. III
 low profile
 PC (UL 94 V-0)
 light gray RAL 7035
 1.38"x3.39"x1.23"



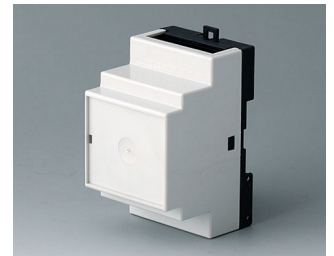
B6501229
 RAILTEC B, 2 modules, Vers.
 low profile
 PC (UL 94 V-0)
 light gray RAL 7035
 1.38"x3.53"x1.23"



B6502110
 RAILTEC B, 3 modules, Vers. V
 PC (UL 94 V-0)
 light gray RAL 7035
 2.07"x3.39"x2.28"



B6502111
 RAILTEC B, 3 modules, Vers. I
 PC (UL 94 V-0)
 light gray RAL 7035
 2.07"x3.39"x2.28"



B6502112
 RAILTEC B, 3 modules, Vers. II
 PC (UL 94 V-0)
 light gray RAL 7035
 2.07"x3.39"x2.28"



B6502113
 RAILTEC B, 3 modules, Vers. III
 PC (UL 94 V-0)
 light gray RAL 7035
 2.07"x3.39"x2.28"



B6502114
 RAILTEC B, 3 modules, Vers. I
 PC (UL 94 V-0)
 light gray RAL 7035
 2.07"x3.39"x2.28"



B6502115
 RAILTEC B, 3 modules, Vers. II
 PC (UL 94 V-0)
 light gray RAL 7035
 2.07"x3.39"x2.28"



B6502116
 RAILTEC B, 3 modules, Vers. III
 PC (UL 94 V-0)
 light gray RAL 7035
 2.07"x3.39"x2.28"



B6502117
 RAILTEC B, 3 modules, Vers. IV
 PC (UL 94 V-0)
 light gray RAL 7035
 2.07"x3.39"x2.28"



B6502118
 RAILTEC B, 3 modules, Vers. IV
 PC (UL 94 V-0)
 light gray RAL 7035
 2.07"x3.39"x2.28"



B6502119
 RAILTEC B, 3 modules, Vers. V
 PC (UL 94 V-0)
 light gray RAL 7035
 2.07"x3.39"x2.28"



B6502121
 RAILTEC B, 3 modules, Vers. VI
 PC (UL 94 V-0)
 light gray RAL 7035
 2.07"x3.54"x2.28"

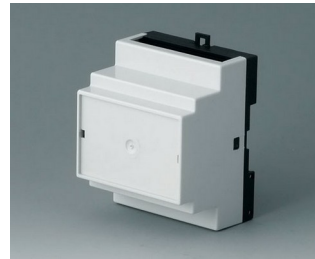
RAILTEC B



B6503110
RAILTEC B, 4 modules, Vers. V
PC (UL 94 V-0)
light gray RAL 7035
2.76"x3.39"x2.28"



B6503111
RAILTEC B, 4 modules, Vers. I
PC (UL 94 V-0)
light gray RAL 7035
2.76"x3.39"x2.28"



B6503112
RAILTEC B, 4 modules, Vers. II
PC (UL 94 V-0)
light gray RAL 7035
2.76"x3.39"x2.28"



B6503113
RAILTEC B, 4 modules, Vers. III
PC (UL 94 V-0)
light gray RAL 7035
2.76"x3.39"x2.28"



B6503114
RAILTEC B, 4 modules, Vers. I
PC (UL 94 V-0)
light gray RAL 7035
2.76"x3.39"x2.28"



B6503115
RAILTEC B, 4 modules, Vers. II
PC (UL 94 V-0)
light gray RAL 7035
2.76"x3.39"x2.28"



B6503116
RAILTEC B, 4 modules, Vers. III
PC (UL 94 V-0)
light gray RAL 7035
2.76"x3.39"x2.28"



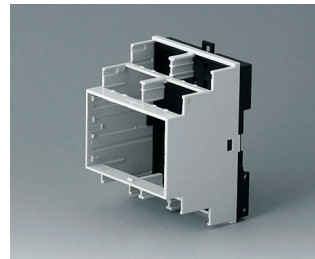
B6503117
RAILTEC B, 4 modules, Vers. IV
PC (UL 94 V-0)
light gray RAL 7035
2.76"x3.39"x2.28"



B6503118
RAILTEC B, 4 modules, Vers. IV
PC (UL 94 V-0)
light gray RAL 7035
2.76"x3.39"x2.28"



B6503119
RAILTEC B, 4 modules, Vers. V
PC (UL 94 V-0)
light gray RAL 7035
2.76"x3.39"x2.28"



B6503121
RAILTEC B, 4 modules, Vers. VI
PC (UL 94 V-0)
light gray RAL 7035
2.76"x3.54"x2.28"



B6503223
RAILTEC B, 4 modules, Vers. III
low profile
PC (UL 94 V-0)
light gray RAL 7035
2.76"x3.39"x1.23"



B6503229
RAILTEC B, 4 modules, Vers.
low profile
PC (UL 94 V-0)
light gray RAL 7035
2.76"x3.53"x1.23"



B6504110
RAILTEC B, 6 modules, Vers. V
PC (UL 94 V-0)
light gray RAL 7035
4.13"x3.39"x2.32"

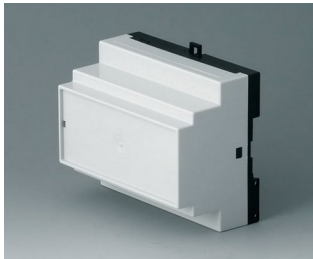


B6504111
RAILTEC B, 6 modules, Vers. I
PC (UL 94 V-0)
light gray RAL 7035
4.13"x3.39"x2.32"



B6504112
RAILTEC B, 6 modules, Vers. II
PC (UL 94 V-0)
light gray RAL 7035
4.13"x3.39"x2.32"

RAILTEC B



B6504113
RAILTEC B, 6 modules, Vers. III
PC (UL 94 V-0)
light gray RAL 7035
4.13"x3.39"x2.32"



B6504114
RAILTEC B, 6 modules, Vers. I
PC (UL 94 V-0)
light gray RAL 7035
4.13"x3.39"x2.32"



B6504115
RAILTEC B, 6 modules, Vers. II
PC (UL 94 V-0)
light gray RAL 7035
4.13"x3.39"x2.32"



B6504116
RAILTEC B, 6 modules, Vers. III
PC (UL 94 V-0)
light gray RAL 7035
4.13"x3.39"x2.32"



B6504117
RAILTEC B, 6 modules, Vers. IV
PC (UL 94 V-0)
light gray RAL 7035
4.13"x3.39"x2.32"



B6504118
RAILTEC B, 6 modules, Vers. IV
PC (UL 94 V-0)
light gray RAL 7035
4.13"x3.39"x2.32"



B6504119
RAILTEC B, 6 modules, Vers. V
PC (UL 94 V-0)
light gray RAL 7035
4.13"x3.39"x2.32"



B6504121
RAILTEC B, 6 modules, Vers. VI
PC (UL 94 V-0)
light gray RAL 7035
4.13"x3.54"x2.28"



B6504223
RAILTEC B, 6 modules, Vers. III
low profile
PC (UL 94 V-0)
light gray RAL 7035
4.13"x3.39"x1.23"



B6504229
RAILTEC B, 6 modules, Vers.
low profile
PC (UL 94 V-0)
light gray RAL 7035
4.13"x3.53"x1.23"



B6505110
RAILTEC B, 9 modules, Vers. V
PC (UL 94 V-0)
light gray RAL 7035
6.18"x3.39"x2.32"



B6505111
RAILTEC B, 9 modules, Vers. I
PC (UL 94 V-0)
light gray RAL 7035
6.18"x3.39"x2.32"



B6505112
RAILTEC B, 9 modules, Vers. II
PC (UL 94 V-0)
light gray RAL 7035
6.18"x3.39"x2.32"



B6505113
RAILTEC B, 9 modules, Vers. III
PC (UL 94 V-0)
light gray RAL 7035
6.18"x3.39"x2.32"



B6505114
RAILTEC B, 9 modules, Vers. I
PC (UL 94 V-0)
light gray RAL 7035
6.18"x3.39"x2.32"



B6505115
RAILTEC B, 9 modules, Vers. II
PC (UL 94 V-0)
light gray RAL 7035
6.18"x3.39"x2.32"

RAILTEC B



B6505116
RAILTEC B, 9 modules, Vers. III
PC (UL 94 V-0)
light gray RAL 7035
6.18"x3.39"x2.32"



B6505117
RAILTEC B, 9 modules, Vers. IV
PC (UL 94 V-0)
light gray RAL 7035
6.18"x3.39"x2.32"



B6505118
RAILTEC B, 9 modules, Vers. IV
PC (UL 94 V-0)
light gray RAL 7035
6.18"x3.39"x2.32"



B6505119
RAILTEC B, 9 modules, Vers. V
PC (UL 94 V-0)
light gray RAL 7035
6.18"x3.39"x2.32"



B6505121
RAILTEC B, 9 modules, Vers. VI
PC (UL 94 V-0)
light gray RAL 7035
6.18"x3.54"x2.28"



B6505223
RAILTEC B, 9 modules, Vers. III
low profile
PC (UL 94 V-0)
light gray RAL 7035
6.18"x3.39"x1.23"



B6505229
RAILTEC B, 9 modules, Vers.
low profile
PC (UL 94 V-0)
light gray RAL 7035
6.20"x3.53"x1.23"



B6506110
RAILTEC B, 12 modules, Vers. V
PC (UL 94 V-0)
light gray RAL 7035
8.27"x3.54"x2.28"



B6506111
RAILTEC B, 12 modules, Vers. I
PC (UL 94 V-0)
light gray RAL 7035
8.27"x3.54"x2.28"



B6506112
RAILTEC B, 12 modules, Vers. II
PC (UL 94 V-0)
light gray RAL 7035
8.27"x3.54"x2.28"



B6506113
RAILTEC B, 12 modules, Vers.
III
PC (UL 94 V-0)
light gray RAL 7035
8.27"x3.54"x2.28"



B6506114
RAILTEC B, 12 modules, Vers. I
PC (UL 94 V-0)
light gray RAL 7035
8.27"x3.54"x2.28"



B6506115
RAILTEC B, 12 modules, Vers. II
PC (UL 94 V-0)
light gray RAL 7035
8.27"x3.54"x2.28"



B6506116
RAILTEC B, 12 modules, Vers.
III
PC (UL 94 V-0)
light gray RAL 7035
8.27"x3.54"x2.28"



B6506117
RAILTEC B, 12 modules, Vers.
IV
PC (UL 94 V-0)
light gray RAL 7035
8.27"x3.54"x2.28"

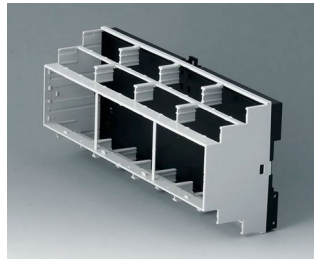


B6506118
RAILTEC B, 12 modules, Vers.
IV
PC (UL 94 V-0)
light gray RAL 7035
8.27"x3.54"x2.28"

RAILTEC B



B6506119
RAILTEC B, 12 modules, Vers. V
PC (UL 94 V-0)
light gray RAL 7035
8.27"x3.54"x2.28"



B6506121
RAILTEC B, 12 modules, Vers.
VI
PC (UL 94 V-0)
light gray RAL 7035
8.27"x3.54"x2.28"



B6511111
RAILTEC B, 2 modules, Vers. XI
PC (UL 94 V-0)
light gray RAL 7035
1.38"x3.39"x2.28"



B6511112
RAILTEC B, 2 modules, Vers. XII
PC (UL 94 V-0)
light gray RAL 7035
1.38"x3.39"x2.28"



B6511113
RAILTEC B, 2 modules, Vers.
XIII
PC (UL 94 V-0)
light gray RAL 7035
1.38"x3.39"x2.28"



B6513111
RAILTEC B, 4 modules, Vers. XI
PC (UL 94 V-0)
light gray RAL 7035
2.76"x3.39"x2.28"



B6513112
RAILTEC B, 4 modules, Vers. XII
PC (UL 94 V-0)
light gray RAL 7035
2.76"x3.39"x2.28"



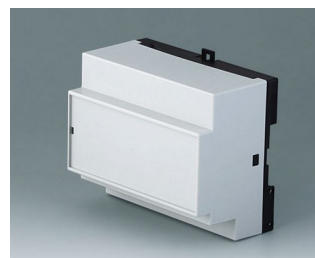
B6513113
RAILTEC B, 4 modules, Vers.
XIII
PC (UL 94 V-0)
light gray RAL 7035
2.76"x3.39"x2.28"



B6514111
RAILTEC B, 6 modules, Vers. XI
PC (UL 94 V-0)
light gray RAL 7035
4.13"x3.39"x2.32"



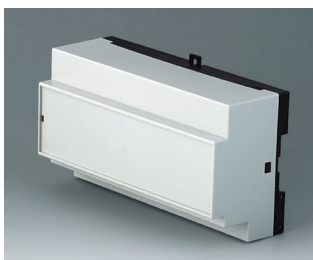
B6514112
RAILTEC B, 6 modules, Vers. XII
PC (UL 94 V-0)
light gray RAL 7035
4.13"x3.39"x2.32"



B6514113
RAILTEC B, 6 modules, Vers.
XIII
PC (UL 94 V-0)
light gray RAL 7035
4.13"x3.39"x2.32"



B6515111
RAILTEC B, 9 modules, Vers. XI
PC (UL 94 V-0)
light gray RAL 7035
6.18"x3.39"x2.32"



B6515112
RAILTEC B, 9 modules, Vers. XII
PC (UL 94 V-0)
light gray RAL 7035
6.18"x3.39"x2.32"



B6515113
RAILTEC B, 9 modules, Vers.
XIII
PC (UL 94 V-0)
light gray RAL 7035
6.18"x3.39"x2.32"



B6522101
RAILTEC BP, M22, with closed
side panels
PC (UL 94 V-0)
light gray RAL 7035
3.74"x0.91"x4.45"



B6522102
RAILTEC BP, M22, closed/with
ventilation slots
PC (UL 94 V-0)
light gray RAL 7035
3.74"x0.91"x4.45"

RAILTEC B



B6522103
RAILTEC BP, M22, with
ventilation slots
PC (UL 94 V-0)
light gray RAL 7035
3.74"x0.91"x4.45"

Accessory "protection"



B6622101
Hinged cover
transparent

Accessory "wall/holder"



B6600334
Wall suspension elements
PPO (UL 94 V-0)
black

Accessory "terminals"



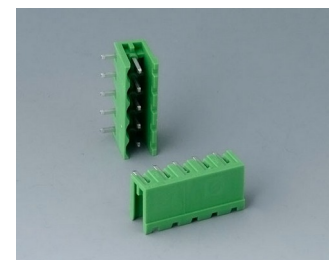
B6600111
Terminal block, block 5.0 mm
PA 68 (UL 94 V-0)
light gray



B6600222
Plug header, block 5.08 mm
PA 68 (UL 94 V-0)



B6601111
Terminal block, block 5.0 mm
PA 68 (UL 94 V-0)

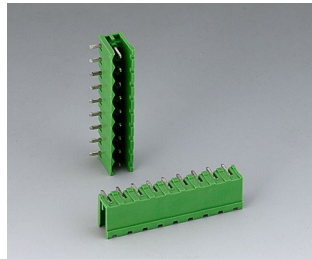


B6601222
Plug header, block 5.08 mm
PA 6 (UL 94 V-0)

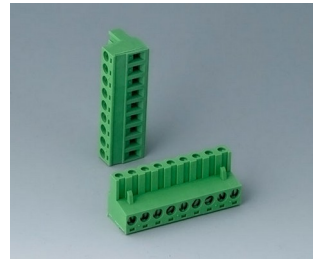
RAILTEC B



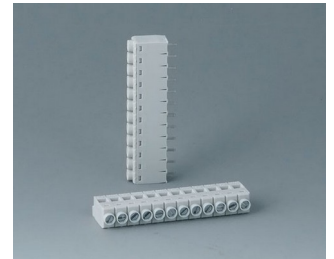
B6601223
 Plug header, block 5.08 mm
 PA 6 (UL 94 V-0)



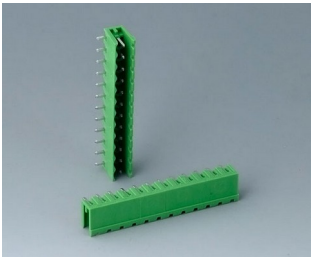
B6602222
 Plug header, block 5.08 mm
 PA 6 (UL 94 V-0)



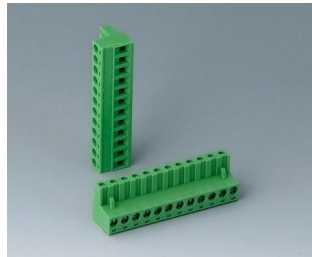
B6602223
 Plug header, block 5.08 mm
 PA 6 (UL 94 V-0)



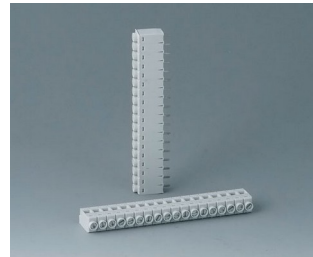
B6603111
 Terminal block, block 5.0 mm
 PA 68 (UL 94 V-0)



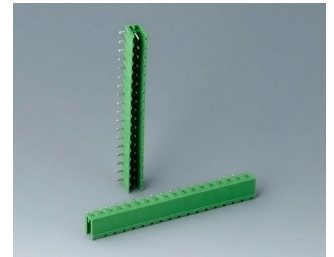
B6603222
 Plug header, block 5.08 mm
 PA 6 (UL 94 V-0)



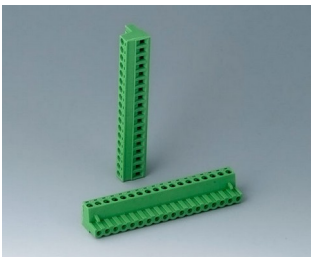
B6603223
 Plug header, block 5.08 mm
 PA 6 (UL 94 V-0)



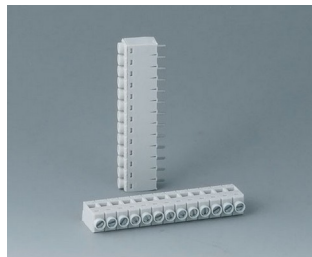
B6604111
 Terminal block, block 5.0 mm
 PA 68 (UL 94 V-0)



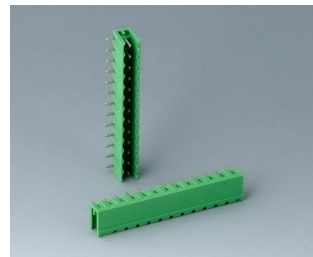
B6604222
 Plug header, block 5.08 mm
 PA 68 (UL 94 V-0)



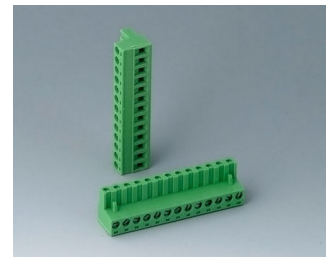
B6604223
 Plug header, block 5.08 mm
 PA 68 (UL 94 V-0)



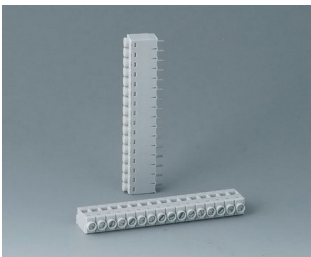
B6605111
 Terminal block, block 5.0 mm
 PA 68 (UL 94 V-0)



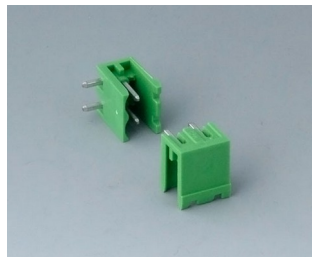
B6605222
 Plug header, block 5.08 mm
 PA 6 (UL 94 V-0)



B6605223
 Plug header, block 5.08 mm
 PA 6 (UL 94 V-0)



B6606111
 Terminal block, block 5.0 mm
 PA 68 (UL 94 V-0)



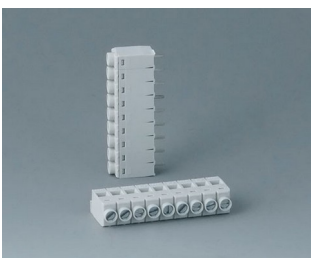
B6606222
 Plug header, block 5.08 mm
 PA 6 (UL 94 V-0)



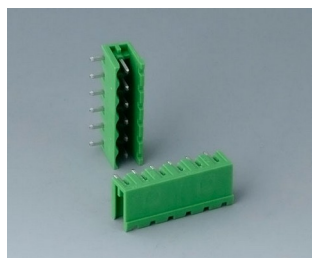
B6606223
 Plug header, block 5.08 mm
 PA 6 (UL 94 V-0)



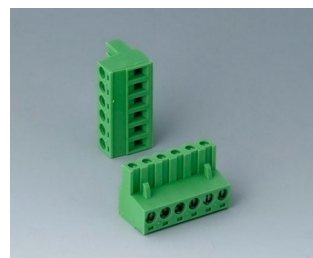
B6607111
 Terminal block, block 5.0 mm
 PA 68 (UL 94 V-0)



B6608111
 Terminal block, block 5.0 mm
 PA 68 (UL 94 V-0)



B6608222
 Plug header, block 5.08 mm
 PA 68 (UL 94 V-0)



B6608223
 Plug header, block 5.08 mm
 PA 68 (UL 94 V-0)

RAILTEC B

Accessory "terminal guards"



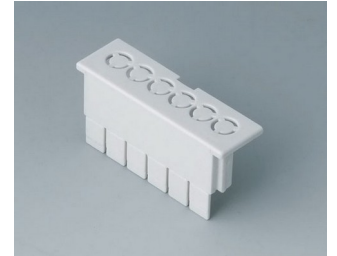
B6607140
Terminal guards, flat
PC (UL 94 V-0)
light gray



B6607141
Terminal guards, flat
PC (UL 94 V-0)
light gray



B6607142
Terminal guards, flat
PC (UL 94 V-0)
light gray



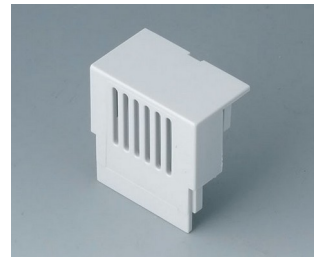
B6607143
Terminal guards, flat
PC (UL 94 V-0)
light gray



B6607145
KNX Cover, flat
PC (UL 94 V-0)
light gray



B6607160
Terminal guards, high
PC (UL 94 V-0)
light gray



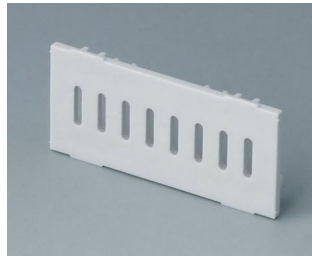
B6607161
Terminal guards, high
PC (UL 94 V-0)
light gray



B6607162
Terminal guards, high
PC (UL 94 V-0)
light gray



B6607163
Terminal guards, high
PC (UL 94 V-0)
light gray



B6607191
Partition plate
PC (UL 94 V-0)
light gray



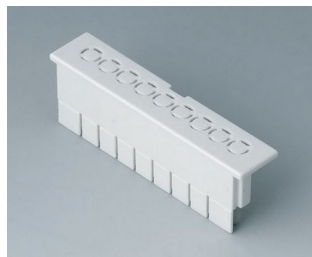
B6608140
Terminal guards, flat
PC (UL 94 V-0)
light gray



B6608141
Terminal guards, flat
PC (UL 94 V-0)
light gray



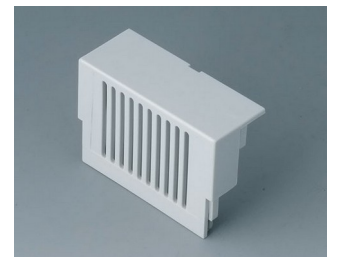
B6608142
Terminal guards, flat
PC (UL 94 V-0)
light gray



B6608143
Terminal guards, flat
PC (UL 94 V-0)
light gray



B6608160
Terminal guards, high
PC (UL 94 V-0)
light gray



B6608161
Terminal guards, high
PC (UL 94 V-0)
light gray

RAILTEC B



B6608162
Terminal guards, high
PC (UL 94 V-0)
light gray



B6608163
Terminal guards, high
PC (UL 94 V-0)
light gray



B6608191
Partition plate
PC (UL 94 V-0)
light gray

Accessory "screws"



A0305031
Self-tapping screws 0.098" x
0.236" (PZ1)

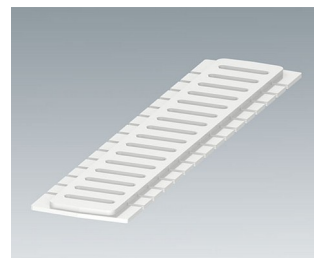
Accessory



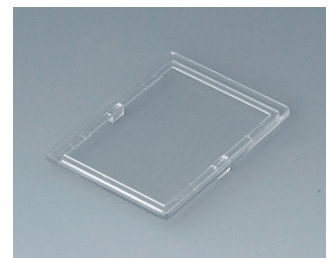
B6522801
Front panel
PC (UL 94 V-0)
light gray RAL 7035



B6522811
Side panel closed
PC (UL 94 V-0)
light gray RAL 7035



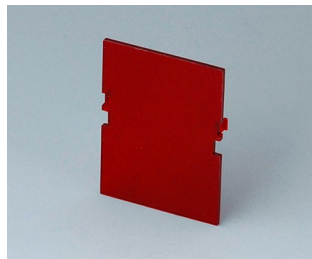
B6522821
Side panel with ventilation slots
PC (UL 94 V-0)
light gray RAL 7035



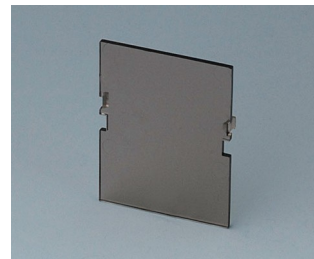
B6601100
Lid, 2 modules
PC (UL 94 V-0)
transparent



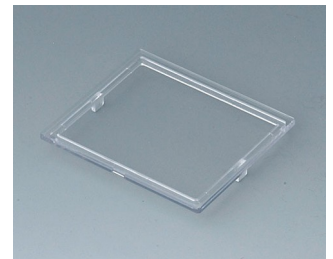
B6601180
Front panel, 2 modules, Vers. VI
PC (UL 94 V-0)
light gray
1.26"x1.65"



B6601480
Front panel, 2 modules, Vers. VI
PC (UL 94 V-0)
red transparent
1.26"x1.65"

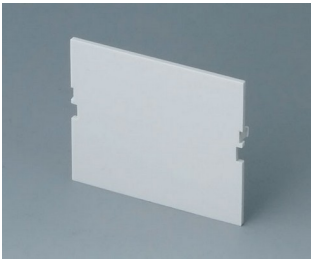


B6601580
Front panel, 2 modules, Vers. VI
PC (UL 94 V-0)
smoked glass
1.26"x1.65"

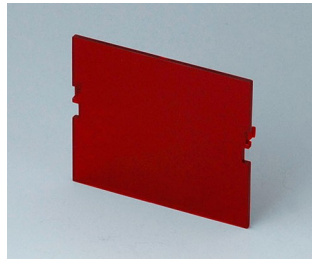


B6602100
Lid, 3 modules
PC (UL 94 V-0)
transparent

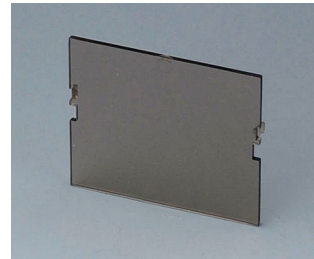
RAILTEC B



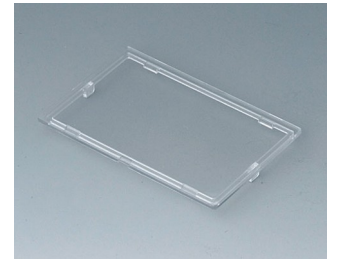
B6602180
 Front panel, 3 modules, Vers. VI
 PC (UL 94 V-0)
 light gray
 1.93"x1.65"



B6602480
 Front panel, 3 modules, Vers. VI
 PC (UL 94 V-0)
 red transparent
 1.93"x1.65"



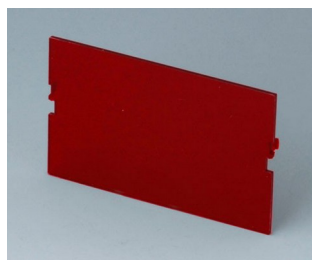
B6602580
 Front panel, 3 modules, Vers. VI
 PC (UL 94 V-0)
 smoked glass
 1.65"x1.93"



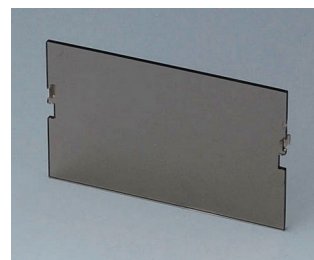
B6603100
 Lid, 4 modules
 PC (UL 94 V-0)
 transparent



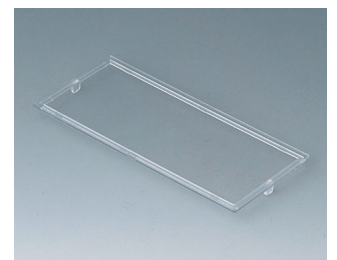
B6603180
 Front panel, 4 modules, Vers. VI
 PC (UL 94 V-0)
 light gray
 2.64"x1.65"



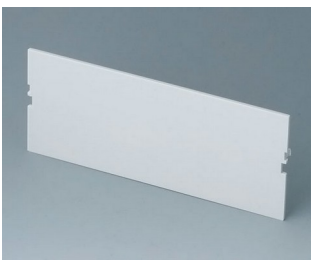
B6603480
 Front panel, 4 modules, Vers. VI
 PC (UL 94 V-0)
 red transparent
 2.64"x1.65"



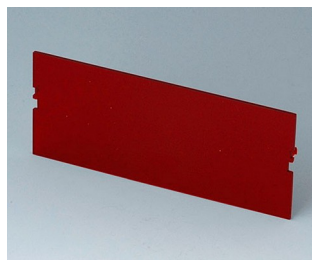
B6603580
 Front panel, 4 modules, Vers. VI
 PC (UL 94 V-0)
 smoked glass
 2.64"x1.65"



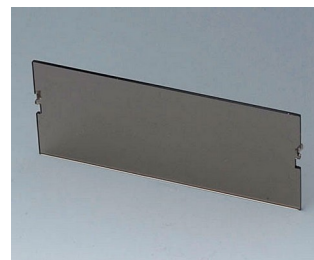
B6604100
 Lid, 6 modules
 PC (UL 94 V-0)
 transparent



B6604180
 Front panel, 6 modules, Vers. VI
 PC (UL 94 V-0)
 light gray
 4.02"x1.65"



B6604480
 Front panel, 6 modules, Vers. VI
 PC (UL 94 V-0)
 red transparent
 4.02"x1.65"



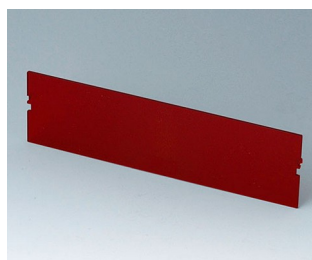
B6604580
 Front panel, 6 modules, Vers. VI
 PC (UL 94 V-0)
 smoked glass
 4.02"x1.65"



B6605100
 Lid, 9 modules
 PC (UL 94 V-0)
 transparent



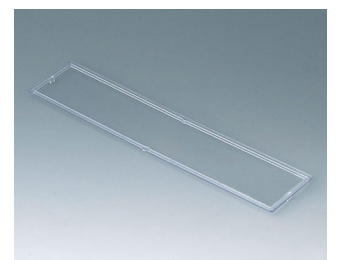
B6605180
 Front panel, 9 modules, Vers. VI
 PC (UL 94 V-0)
 light gray
 6.10"x1.65"



B6605480
 Front panel, 9 modules, Vers. VI
 PC (UL 94 V-0)
 red transparent
 6.10"x1.65"



B6605580
 Front panel, 9 modules, Vers. VI
 PC (UL 94 V-0)
 smoked glass
 6.10"x1.65"



B6606100
 Lid, 12 modules
 PC (UL 94 V-0)
 transparent

RAILTEC B



B6606180
Front panel, 12 modules, Vers.
VI
PC (UL 94 V-0)
light gray
8.11"x1.65"



B6606480
Front panel, 12 modules, Vers.
VI
PC (UL 94 V-0)
red transparent
8.11"x1.65"



B6606580
Front panel, 12 modules, Vers.
VI
PC (UL 94 V-0)
smoked glass
8.11"x1.65"

Subject to technical modification without notice. © by OKW Gehäusesysteme, Buchen/Germany.