

RAILTEC C

Modular DIN rail enclosures and open PCB holders

Extensive range of DIN rail cases for mounting to standard DIN EN 60715 rails, or for panel mounting. Also, open DIN rail PCB supports/holders for individual component mounting and simple replacement of the interfaces.

- all types designed for fast installation of PCBs and terminals
- outstanding material properties for tough conditions, with high temperature stability (UL 94 V-0)
- easy and fast assembly with snap-in installation of the enclosure parts
- **RAILTEC C:** for PCB terminal blocks, plug headers and front connectors; optional frame for additional PCB position; front panels and lids in different versions; 1 to 12 module widths; for DIN rails EN 60715 TH35; PCB positioning in all 3 directions; adapter for TH15 and G32 rails (1 to 4 module models) as accessory
- Version I front open, connection side with free through passage, without ventilation slots
- Version II front open, connection side with free through passage, with ventilation slots
- Version III front open, connection side with extended case wall, without ventilation slots
- Version IV front closed, connection side with free through passage, without ventilation slots
- **RAILTEC SUPPORT:** PCB holder for DIN rail mounting; modular design for individual component mounting; for DIN rails EN 60715 TH35, TH15 and G32
- protection class < IP 40



[View Customizing Options](#)

RAILTEC C

What do you still need for your own very personal product? We can supply enclosures and tuning knobs with all necessary modifications for fitting your electronic components.
Customizing options for Railtec C



Machining



Lacquering



Printing



Laser marking



Decor foils



Installation / Assembly
of accessories

Select Versions



B6700100
RAILTEC C, 1 module, Vers. I
PC (UL 94 V-0)
light gray
0.69"x3.54"x2.28"



B6700102
RAILTEC C, 1 module, Vers. II
PC (UL 94 V-0)
light gray
0.69"x3.54"x2.28"



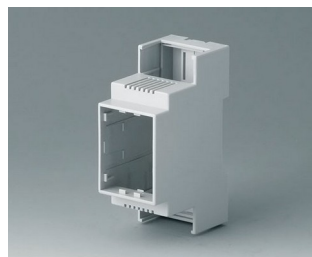
B6700104
RAILTEC C, 1 module, Vers. III
PC (UL 94 V-0)
light gray
0.69"x3.54"x2.28"



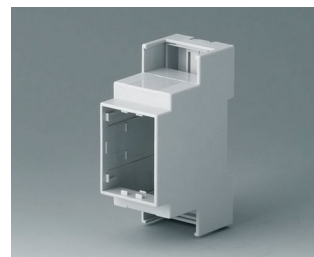
B6700106
RAILTEC C, 1 module, Vers. IV
PC (UL 94 V-0)
light gray
0.69"x3.54"x2.28"



B6701100
RAILTEC C, 2 modules, Vers. I
PC (UL 94 V-0)
light gray
1.42"x3.54"x2.28"



B6701102
RAILTEC C, 2 modules, Vers. II
PC (UL 94 V-0)
light gray
1.42"x3.54"x2.28"



B6701104
RAILTEC C, 2 modules, Vers. III
PC (UL 94 V-0)
light gray
1.42"x3.54"x2.28"

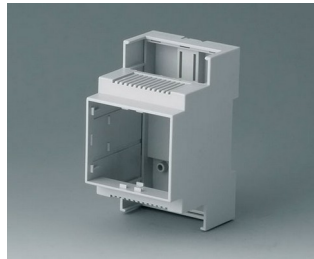


B6701106
RAILTEC C, 2 modules, Vers. IV
PC (UL 94 V-0)
light gray
1.42"x3.54"x2.28"

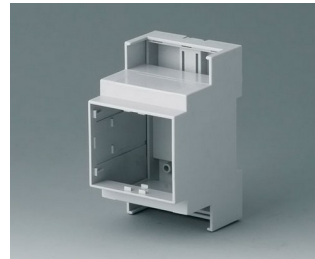
RAILTEC C



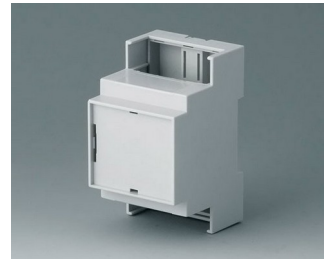
B6702100
 RAILTEC C, 3 modules, Vers. I
 PC (UL 94 V-0)
 light gray
 2.09"x3.54"x2.28"



B6702102
 RAILTEC C, 3 modules, Vers. II
 PC (UL 94 V-0)
 light gray
 2.09"x3.54"x2.28"



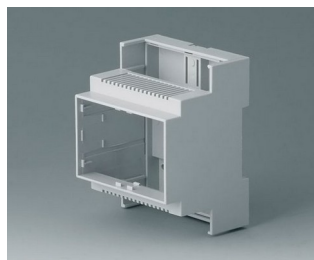
B6702104
 RAILTEC C, 3 modules, Vers. III
 PC (UL 94 V-0)
 light gray
 2.09"x3.54"x2.28"



B6702106
 RAILTEC C, 3 modules, Vers. IV
 PC (UL 94 V-0)
 light gray
 2.09"x3.54"x2.28"



B6703100
 RAILTEC C, 4 modules, Vers. I
 PC (UL 94 V-0)
 light gray
 2.80"x3.54"x2.28"



B6703102
 RAILTEC C, 4 modules, Vers. II
 PC (UL 94 V-0)
 light gray
 2.80"x3.54"x2.28"



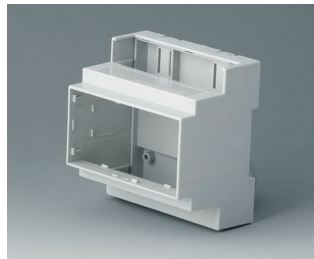
B6703104
 RAILTEC C, 4 modules, Vers. III
 PC (UL 94 V-0)
 light gray
 2.80"x3.54"x2.28"



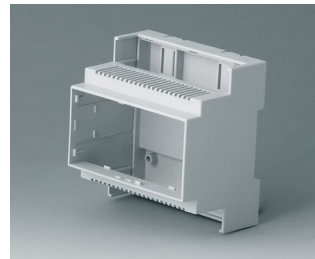
B6703106
 RAILTEC C, 4 modules, Vers. IV
 PC (UL 94 V-0)
 light gray
 2.80"x3.54"x2.28"



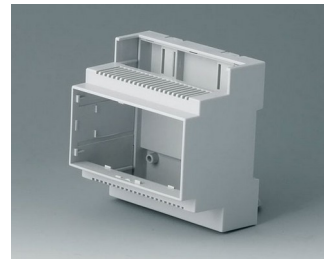
B6704100
 RAILTEC C, 5 modules, Vers. I
 PC (UL 94 V-0)
 light gray
 3.46"x3.54"x2.28"



B6704101
 RAILTEC C, 5 modules, Vers. I
 PC (UL 94 V-0)
 light gray
 3.46"x3.54"x2.28"



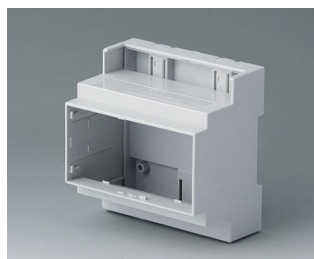
B6704102
 RAILTEC C, 5 modules, Vers. II
 PC (UL 94 V-0)
 light gray
 3.46"x3.54"x2.28"



B6704103
 RAILTEC C, 5 modules, Vers. II
 PC (UL 94 V-0)
 light gray
 3.46"x3.54"x2.28"



B6704104
 RAILTEC C, 5 modules, Vers. III
 PC (UL 94 V-0)
 light gray
 3.46"x3.54"x2.28"



B6704105
 RAILTEC C, 5 modules, Vers. III
 PC (UL 94 V-0)
 light gray
 3.46"x3.54"x2.28"



B6704106
 RAILTEC C, 5 modules, Vers. IV
 PC (UL 94 V-0)
 light gray
 3.46"x3.54"x2.28"

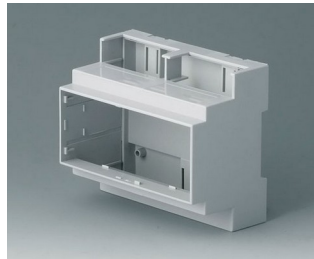


B6704107
 RAILTEC C, 5 modules, Vers. IV
 PC (UL 94 V-0)
 light gray
 3.46"x3.54"x2.28"

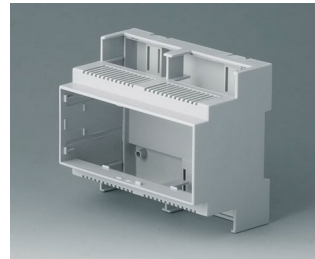
RAILTEC C



B6705100
RAILTEC C, 6 modules, Vers. I
PC (UL 94 V-0)
light gray
4.17"x3.54"x2.28"



B6705101
RAILTEC C, 6 modules, Vers. I
PC (UL 94 V-0)
light gray
4.17"x3.54"x2.28"



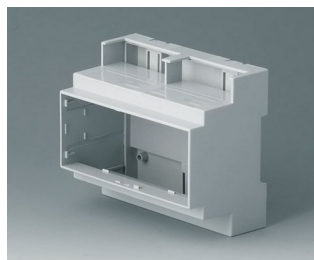
B6705102
RAILTEC C, 6 modules, Vers. II
PC (UL 94 V-0)
light gray
4.17"x3.54"x2.28"



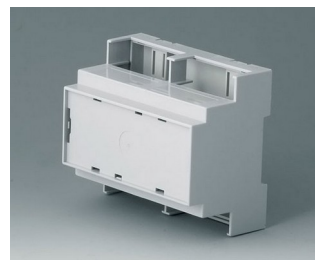
B6705103
RAILTEC C, 6 modules, Vers. II
PC (UL 94 V-0)
light gray
4.17"x3.54"x2.28"



B6705104
RAILTEC C, 6 modules, Vers. III
PC (UL 94 V-0)
light gray
4.17"x3.54"x2.28"



B6705105
RAILTEC C, 6 modules, Vers. III
PC (UL 94 V-0)
light gray
4.17"x3.54"x2.28"



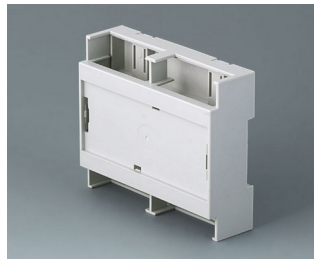
B6705106
RAILTEC C, 6 modules, Vers. IV
PC (UL 94 V-0)
light gray
4.17"x3.54"x2.28"



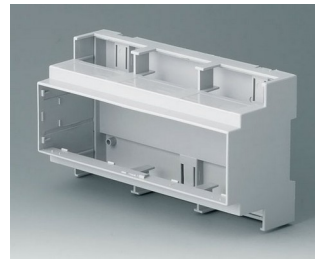
B6705107
RAILTEC C, 6 modules, Vers. IV
PC (UL 94 V-0)
light gray
4.17"x3.54"x2.28"



B6705800
RAILTEC C, 6 modules, flat,
Vers. I
PC (UL 94 V-0)
light gray
4.18"x3.54"x1.26"



B6705806
RAILTEC C, 6 modules, flat,
Vers. IV
PC (UL 94 V-0)
light gray
4.18"x3.54"x1.26"



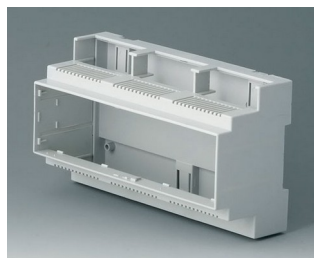
B6706100
RAILTEC C, 9 modules, Vers. I
PC (UL 94 V-0)
light gray
6.30"x3.54"x2.28"



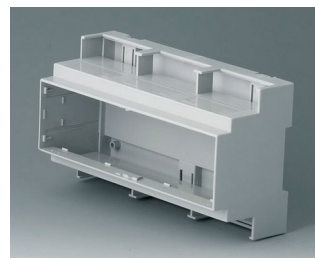
B6706101
RAILTEC C, 9 modules, Vers. I
PC (UL 94 V-0)
light gray
6.30"x3.54"x2.28"



B6706102
RAILTEC C, 9 modules, Vers. II
PC (UL 94 V-0)
light gray
6.30"x3.54"x2.28"



B6706103
RAILTEC C, 9 modules, Vers. II
PC (UL 94 V-0)
light gray
6.30"x3.54"x2.28"



B6706104
RAILTEC C, 9 modules, Vers. III
PC (UL 94 V-0)
light gray
6.30"x3.54"x2.28"

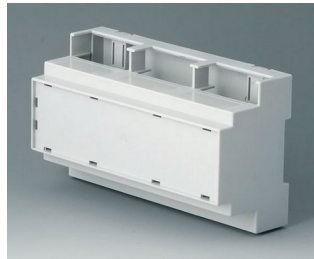


B6706105
RAILTEC C, 9 modules, Vers. III
PC (UL 94 V-0)
light gray
6.30"x3.54"x2.28"

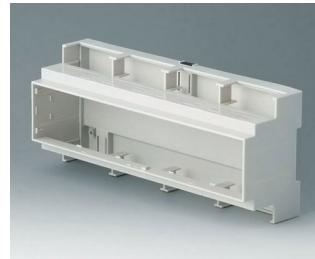
RAILTEC C



B6706106
RAILTEC C, 9 modules, Vers. IV
PC (UL 94 V-0)
light gray
6.30"x3.54"x2.28"



B6706107
RAILTEC C, 9 modules, Vers. IV
PC (UL 94 V-0)
light gray
6.30"x3.54"x2.28"



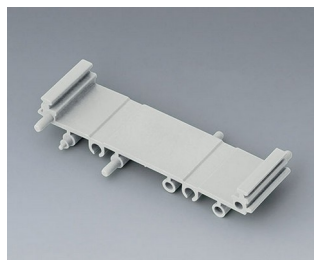
B6707100
RAILTEC C, 12 modules, Vers. I
PC (UL 94 V-0)
light gray
8.27"x3.54"x2.28"



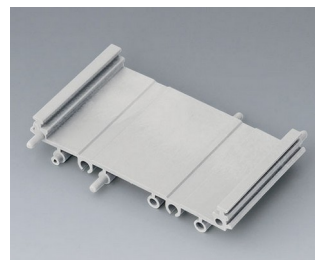
B6707102
RAILTEC C, 12 modules, Vers. II
PC (UL 94 V-0)
light gray
8.27"x3.54"x2.28"



B6724330
RAILTEC SUP. 72, intermediate
part
PA 6 (30) (UL 94 V-0)
light gray
3.23"x0.44"x0.63"



B6724331
RAILTEC SUP. 72, intermediate
part
PA 6 (30) (UL 94 V-0)
light gray
3.23"x0.89"x0.63"



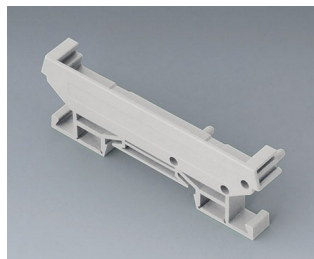
B6724332
RAILTEC SUP. 72, intermediate
part
PA 6 (30) (UL 94 V-0)
light gray
3.23"x1.77"x0.63"



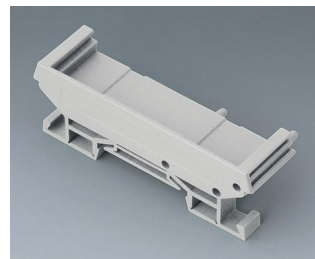
B6724333
RAILTEC SUP. 72, end section
PA 6 (30) (UL 94 V-0)
light gray
3.23"x0.44"x0.63"



B6724334
RAILTEC SUP. 72, end section
PA 6 (30) (UL 94 V-0)
light gray
3.23"x0.87"x0.63"



B6724335
RAILTEC SUP. 72, end section
with foot
PA 6 (30) (UL 94 V-0)
light gray
3.23"x0.44"x0.89"



B6724336
RAILTEC SUP. 72, end section
with foot
PA 6 (30) (UL 94 V-0)
light gray
3.23"x0.87"x0.89"



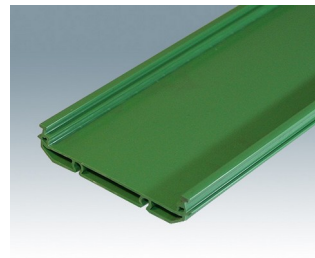
B6724444
RAILTEC SUP. 107, end section
PA 6 (30) (UL 94 V-0)
light gray
4.65"x0.45"x0.69"



B6724445
RAILTEC SUP. 107, end section
with foot
PA 6 (30) (UL 94 V-0)
light gray
4.65"x0.45"x1.08"



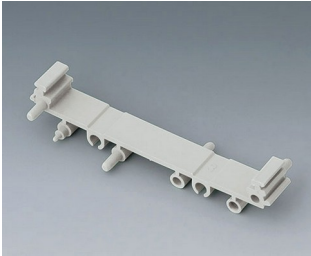
CIME/E/BExxx
RAILTEC SUP. EXT 107, base
section
PVC (UL 94 V-0)
green
4.61"x0.71"



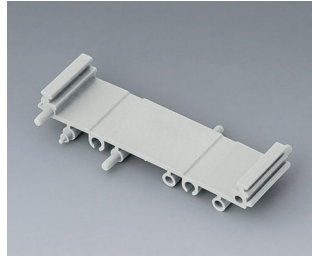
CIME/M/BExxx
RAILTEC SUP. EXT 72, base
section
PVC (UL 94 V-0)
green
3.15"x0.63"

RAILTEC C

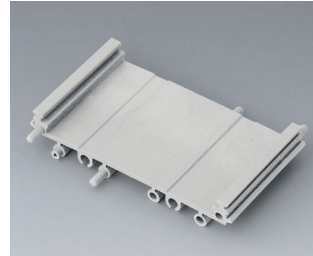
System components to complete



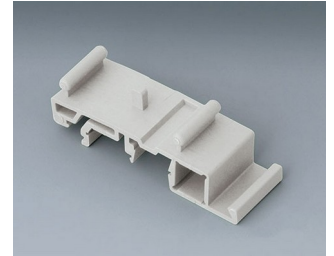
B6724330
RAILTEC SUP. 72, intermediate part
PA 6 (30) (UL 94 V-0)
light gray
3.23"x0.44"x0.63"



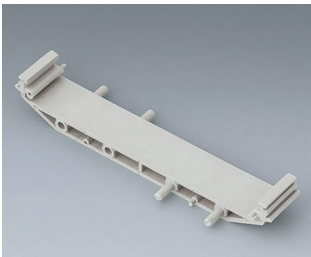
B6724331
RAILTEC SUP. 72, intermediate part
PA 6 (30) (UL 94 V-0)
light gray
3.23"x0.89"x0.63"



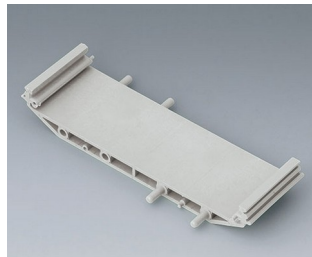
B6724332
RAILTEC SUP. 72, intermediate part
PA 6 (30) (UL 94 V-0)
light gray
3.23"x1.77"x0.63"



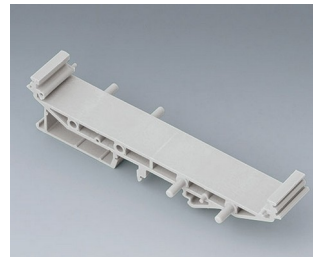
B6724337
RAILTEC SUP. 72, foot
PA 6 (30) (UL 94 V-0)
light gray



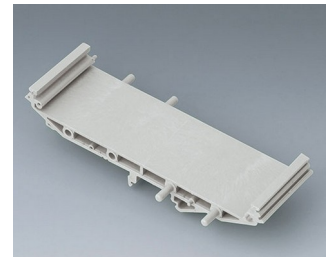
B6724440
RAILTEC SUP. 107, intermediate part
PA 6 (30) (UL 94 V-0)
light gray
4.65"x0.73"x0.69"



B6724441
RAILTEC SUP. 107, intermediate part
PA 6 (30) (UL 94 V-0)
light gray
4.65"x1.38"x0.69"

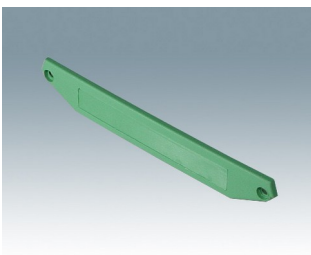


B6724442
RAILTEC SUP. 107, intermediate p. + foot
PA 6 (30) (UL 94 V-0)
light gray
4.65"x0.73"x1.08"

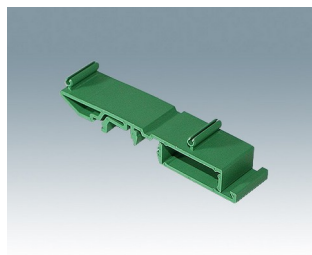


B6724443
RAILTEC SUP. 107, intermediate p. + foot
PA 6 (30) (UL 94 V-0)
light gray
4.65"x1.38"x1.08"

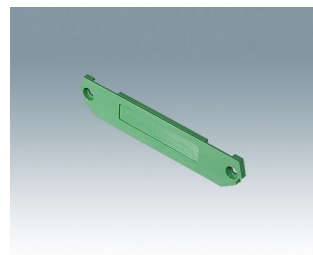
Accessory to complete



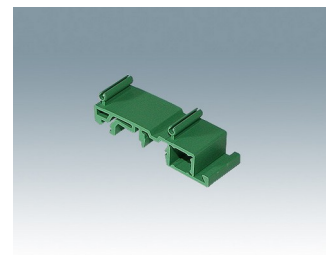
CIME/E/EC0000E
RAILTEC SUP. EXT 107, end cover
PA66 (UL 94 V-0)
green
0.10"x0.69"x4.65"



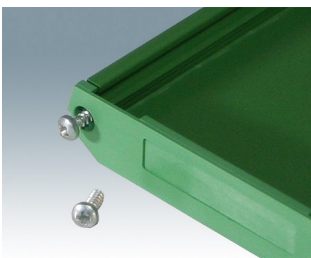
CIME/E/FE0000E
RAILTEC SUP. EXT 107, DIN rail foot
PA66 (UL 94 V-0)
green
0.81"x0.49"x3.60"



CIME/M/EC0000E
RAILTEC SUP. EXT 72, end cover
PA66 (UL 94 V-0)
green
0.08"x0.63"x3.23"



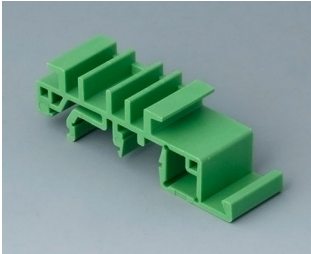
CIME/M/FE0000E
RAILTEC SUP. EXT 72, DIN rail foot
PA66 (UL 94 V-0)
green
0.81"x0.49"x2.36"



CIME/M/SCR
Self-tapping screw

RAILTEC C

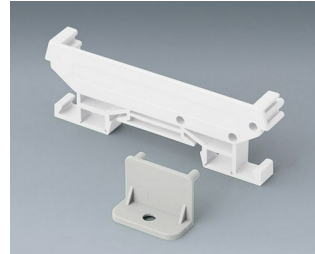
Accessory "wall/holder"



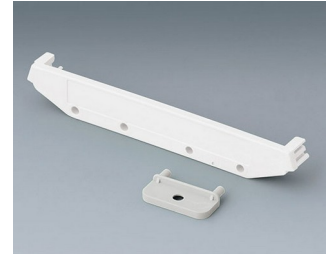
B6811542
Adapter
PA 6 (UL 94 V-0)
green



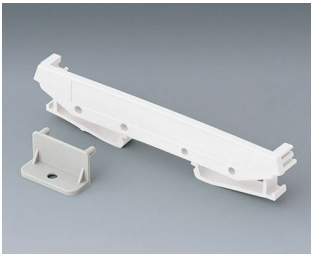
B6824532
Wall suspension element for
SUP. 72
PA 6 (30) (UL 94 V-0)
light gray



B6824533
Wall suspension element with
foot, SUP.
PA 6 (30) (UL 94 V-0)
light gray

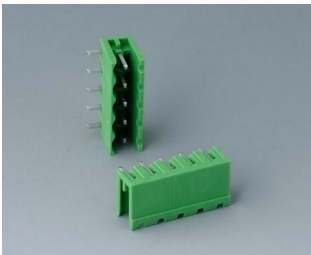


B6824542
Wall suspension element for
SUP. 107
PA 6 (30) (UL 94 V-0)
light gray



B6824543
Wall suspension element with
foot, SUP.
PA 6 (30) (UL 94 V-0)
light gray

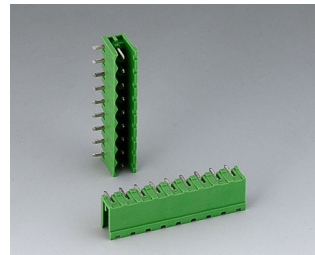
Accessory "terminals"



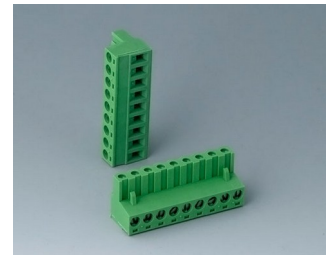
B6601222
Plug header, block 5.08 mm
PA 6 (UL 94 V-0)



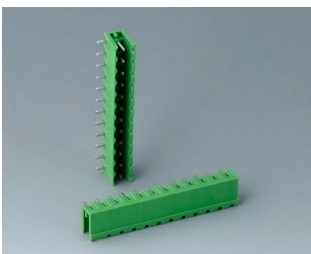
B6601223
Plug header, block 5.08 mm
PA 6 (UL 94 V-0)



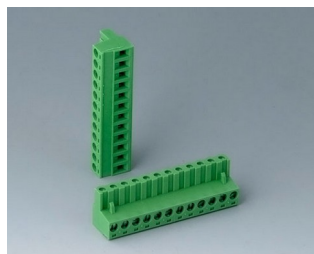
B6602222
Plug header, block 5.08 mm
PA 6 (UL 94 V-0)



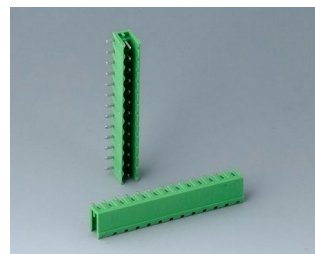
B6602223
Plug header, block 5.08 mm
PA 6 (UL 94 V-0)



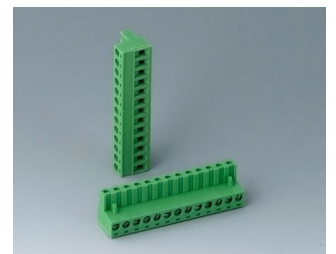
B6603222
Plug header, block 5.08 mm
PA 6 (UL 94 V-0)



B6603223
Plug header, block 5.08 mm
PA 6 (UL 94 V-0)

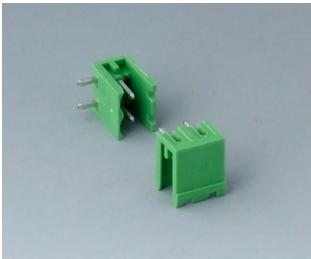


B6605222
Plug header, block 5.08 mm
PA 6 (UL 94 V-0)



B6605223
Plug header, block 5.08 mm
PA 6 (UL 94 V-0)

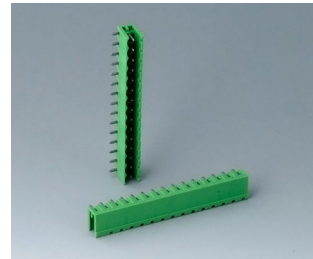
RAILTEC C



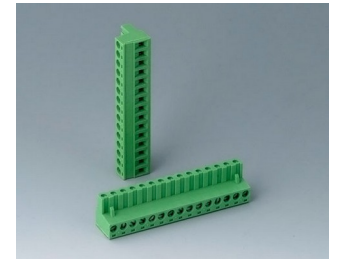
B6606222
 Plug header, block 5.08 mm
 PA 6 (UL 94 V-0)



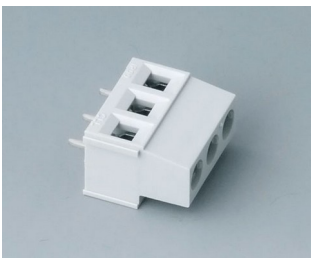
B6606223
 Plug header, block 5.08 mm
 PA 6 (UL 94 V-0)



B6607222
 Plug header, block 5.08 mm
 PA 6 (UL 94 V-0)



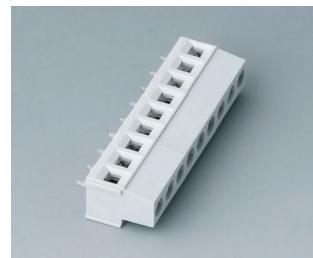
B6607223
 Plug header, block 5.08 mm
 PA 6 (UL 94 V-0)



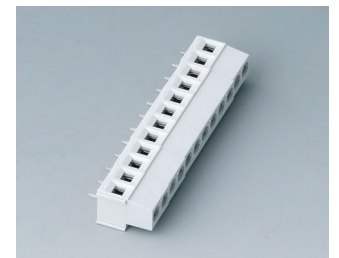
B6800650
 Terminal block, block 5.08 mm
 PA 68 (UL 94 V-0)
 light gray



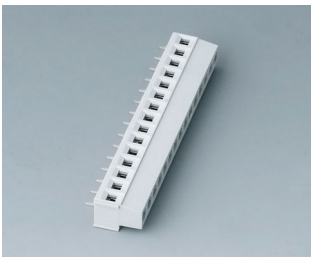
B6801650
 Terminal block, block 5.08 mm
 PA 68 (UL 94 V-0)
 light gray



B6802650
 Terminal block, block 5.08 mm
 PA 68 (UL 94 V-0)
 light gray



B6803650
 Terminal block, block 5.08 mm
 PA 68 (UL 94 V-0)
 light gray



B6804650
 Terminal block, block 5.08 mm
 PA 68 (UL 94 V-0)
 light gray

Accessory "terminal guards"



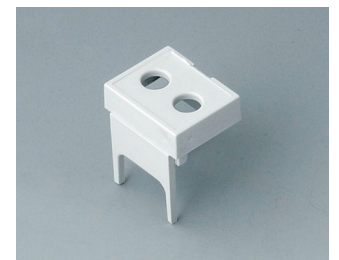
B6800111
 Terminal guards, closed
 PC (UL 94 V-0)
 light gray



B6800112
 Terminal guards, perforated,
 5.08 mm
 PC (UL 94 V-0)
 light gray

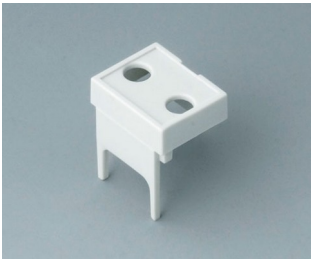


B6800113
 Terminal guards, with holes, 5.08
 mm
 PC (UL 94 V-0)
 light gray



B6800114
 Terminal guards, with holes, 7.5
 mm & 7.62 mm
 PC (UL 94 V-0)
 light gray

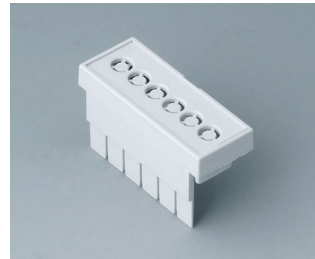
RAILTEC C



B6800115
Terminal guards, with holes,
10.16 mm
PC (UL 94 V-0)
light gray



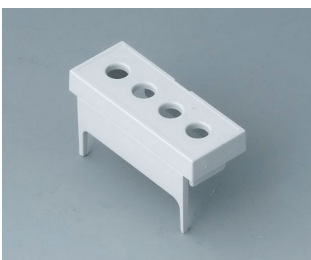
B6801111
Terminal guards, closed
PC (UL 94 V-0)
light gray



B6801112
Terminal guards, perforated,
5.08 mm
PC (UL 94 V-0)
light gray



B6801113
Terminal guards, with holes, 5.08
mm
PC (UL 94 V-0)
light gray



B6801114
Terminal guards, with holes, 7.5
mm & 7.62 mm
PC (UL 94 V-0)
light gray



B6801115
Terminal guards, with holes,
10.16 mm
PC (UL 94 V-0)
light gray



B6802111
Terminal guards, closed
PC (UL 94 V-0)
light gray



B6802112
Terminal guards, perforated,
5.08 mm
PC (UL 94 V-0)
light gray



B6802113
Terminal guards, with holes, 5.08
mm
PC (UL 94 V-0)
light gray



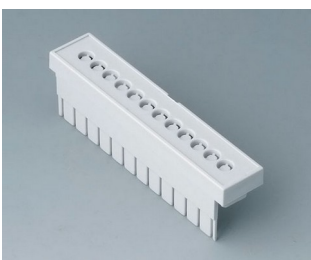
B6802114
Terminal guards, with holes, 7.5
mm & 7.62 mm
PC (UL 94 V-0)
light gray



B6802115
Terminal guards, with holes,
10.16 mm
PC (UL 94 V-0)
light gray



B6803111
Terminal guards, closed
PC (UL 94 V-0)
light gray



B6803112
Terminal guards, perforated,
5.08 mm
PC (UL 94 V-0)
light gray



B6803113
Terminal guards, with holes, 5.08
mm
PC (UL 94 V-0)
light gray



B6803114
Terminal guards, with holes, 7.5
mm & 7.62 mm
PC (UL 94 V-0)
light gray

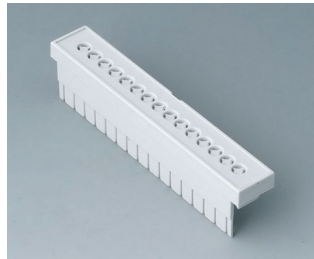


B6803115
Terminal guards, with holes,
10.16 mm
PC (UL 94 V-0)
light gray

RAILTEC C



B6804111
Terminal guards, closed
PC (UL 94 V-0)
light gray



B6804112
Terminal guards, perforated,
5.08 mm
PC (UL 94 V-0)
light gray



B6804113
Terminal guards, with holes, 5.08
mm
PC (UL 94 V-0)
light gray

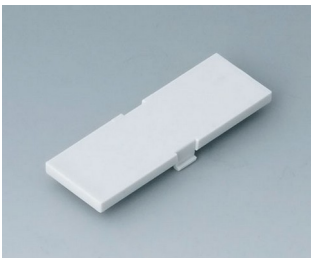


B6804114
Terminal guards, with holes, 7.5
mm & 7.62 mm
PC (UL 94 V-0)
light gray



B6804115
Terminal guards, with holes,
10.16 mm
PC (UL 94 V-0)
light gray

Accessory



B6800100
Front panel, 1 module
PC (UL 94 V-0)
light gray
0.55"x1.65"



B6800200
Front panel, 1 module
PC
transparent
0.55"x1.65"



B6801100
Front panel, 2 modules
PC (UL 94 V-0)
light gray
1.26"x1.65"



B6801200
Front panel, 2 modules
PC
transparent
1.26"x1.65"



B6802100
Front panel, 3 modules
PC (UL 94 V-0)
light gray
1.93"x1.65"



B6802200
Front panel, 3 modules
PC
transparent
1.93"x1.65"



B6803100
Front panel, 4 modules
PC (UL 94 V-0)
light gray
2.64"x1.65"



B6803200
Front panel, 4 modules
PC
transparent
2.64"x1.65"

RAILTEC C



B6804100
 Front panel, 5 modules
 PC (UL 94 V-0)
 light gray
 3.31"x1.65"



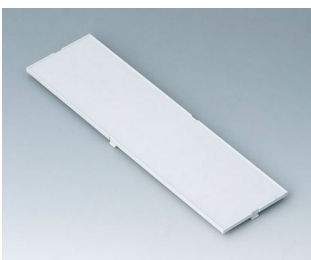
B6804200
 Front panel, 5 modules
 PC
 transparent
 3.31"x1.65"



B6805100
 Front panel, 6 modules
 PC (UL 94 V-0)
 light gray
 4.02"x1.65"



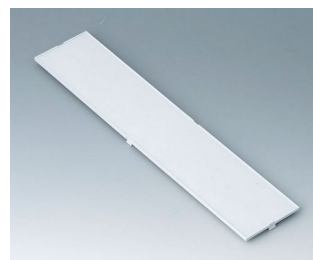
B6805200
 Front panel, 6 modules
 PC
 transparent
 4.02"x1.65"



B6806100
 Front panel, 9 modules
 PC (UL 94 V-0)
 light gray
 6.10"x1.65"



B6806200
 Front panel, 9 modules
 PC
 transparent
 6.10"x1.65"



B6807100
 Front panel, 12 modules
 PC (UL 94 V-0)
 light gray
 8.17"x1.65"

Subject to technical modification without notice. © by OKW Gehäusesysteme, Buchen/Germany.