

TILT FOOT BAR, TILT FEET

- Tilt and swivel carry handle bars made of plastic and diecast zinc. With matching anodized aluminum profile, cut to the correct width for your enclosure, and supplied as a separate component.
- For small plastic enclosures we also offer a range of tilt foot bars which can be fitted anywhere on the base, and provide an ergonomic reading angle.



View Customizing Options

What do you still need for your own very personal product? We can supply enclosures and tuning knobs with all necessary modifications for fitting your electronic components. Customizing options for Tilt foot bar, tilt feet



Machining



Printing



Laser marking



Special material



Installation / Assembly
of accessories

TILT FOOT BAR, TILT FEET

Select Versions



A0350007
 Tilt foot
 ABS (UL 94 HB)
 off-white RAL 9002



A0350008
 Tilt foot
 ABS (UL 94 HB)
 pebble gray RAL 7032



A9152057
 Tilt foot bar
 ABS (UL 94 HB)
 off-white RAL 9002



A9152058
 Tilt foot bar
 ABS (UL 94 HB)
 lava



A9152059
 Tilt foot bar
 ABS (UL 94 HB)
 black RAL 9005



A9209229
 Anti-slide feet 0.335" x 0.087"
 black



A9210180
 Anti-slide feet 0.374" x 0.150"
 transparent



A9210290
 Anti-slide feet 0.374" x 0.150"
 transparent



A9212330
 Anti-slide feet 0.472" x 0.138"
 transparent



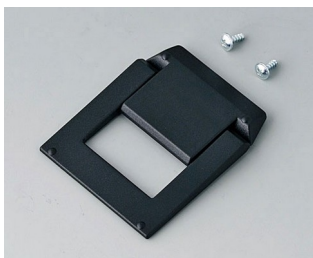
A9250807
 Tilt foot bar
 ABS (UL 94 HB)
 off-white RAL 9002



A9250809
 Tilt foot bar
 ABS (UL 94 HB)
 black RAL 9005



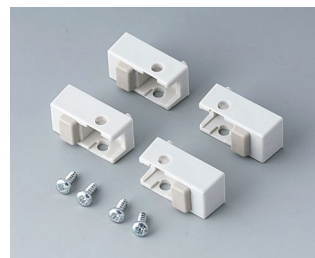
A9250817
 Tilt foot bar
 ABS (UL 94 HB)
 off-white RAL 9002



A9250819
 Tilt foot bar
 ABS (UL 94 HB)
 black RAL 9005



A9257105
 Case feet, Vers. I
 ABS (UL 94 HB)
 light gray RAL 7035



A9257107
 Case feet, Vers. I
 ABS (UL 94 HB)
 off-white RAL 9002

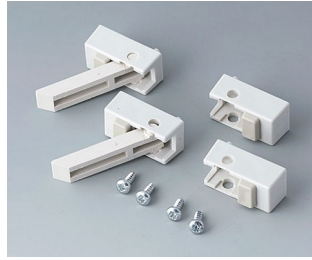


A9257109
 Case feet, Vers. I
 ABS (UL 94 HB)
 black RAL 9005

TILT FOOT BAR, TILT FEET



A9257205
 Case feet, Vers. II
 ABS (UL 94 HB)
 light gray RAL 7035



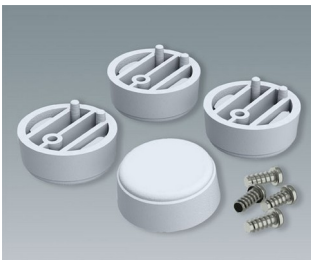
A9257207
 Case feet, Vers. II
 ABS (UL 94 HB)
 off-white RAL 9002



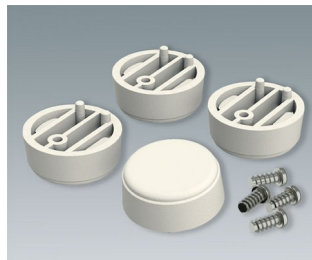
A9257209
 Case feet, Vers. II
 ABS (UL 94 HB)
 black RAL 9005



A9257404
 Case feet, Vers. I
 ABS (UL 94 HB)
 anthracite gray RAL 7016
 ø1.18"x0.47"



A9257405
 Case feet, Vers. I
 ABS (UL 94 HB)
 light gray RAL 7035
 ø1.18"x0.47"



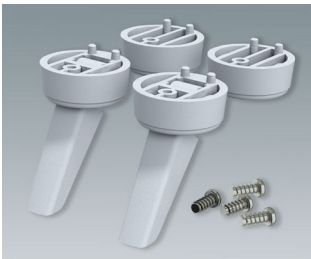
A9257407
 Case feet, Vers. I
 ABS (UL 94 HB)
 off-white RAL 9002
 ø1.18"x0.47"



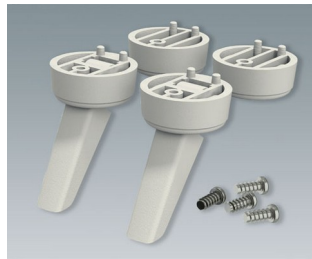
A9257409
 Case feet, Vers. I
 ABS (UL 94 HB)
 black RAL 9005
 ø1.18"x0.47"



A9257504
 Case feet, Vers. II
 ABS (UL 94 HB)
 anthracite gray RAL 7016
 ø1.18"x0.47"



A9257505
 Case feet, Vers. II
 ABS (UL 94 HB)
 light gray RAL 7035
 ø1.18"x0.47"



A9257507
 Case feet, Vers. II
 ABS (UL 94 HB)
 off-white RAL 9002
 ø1.18"x0.47"



A9257509
 Case feet, Vers. II
 ABS (UL 94 HB)
 black RAL 9005
 ø1.18"x0.47"

Accessory



A9207150
 Anti-slide feet 0.256" x 0.079"
 transparent