

# SYNERGY

## Harmonious blend of materials

The new SYNERGY combines the advantages of plastic and aluminum in one single enclosure concept:

- a modern range of enclosures in 4 basic geometrical shapes – square, rectangular, circular and oval \*\*\* **iF product design award** \*\*\*
- 36 enclosure sizes, with plenty of room for the electronics and operating elements
- screw connection with stainless steel screws and Torx drive
- color combination: Aluminum, anodized in silver / plastic parts black
- plenty of space for interfaces, no inclined surfaces, easy assembly
- recessed surface in the top part for decor foils or membrane keyboards
- bottom part with opening and screw-down cover: practical for the use of a battery compartment or for access to the interior, e.g. for a memory card or batteries that are mounted directly on the PCB; battery compartment kit, battery clips for mounting on PCBs and button cell holder as accessories
- cable outlet in the bottom part (extra-flat network cable, round cable up to  $\varnothing$  0.157")
- battery compartment kit, wall suspension element and extender (for increasing the height of the domes) as accessories
- individual enclosure solutions on request

## Designer Statement

"The special feature of SYNERGY is its high-quality appearance. Right from the very start, the main focus of development was the quality of the materials aluminum and plastic. The timeless basic geometric shapes, the discreetly contoured and trimmed operating panels, as well as the intelligent installation technology results in enclosures that meet the aesthetic demands of your customers. And since single elements can be individually processed in length, the variety of shapes, dimensions and functional variants has created an enormous spectrum of possibilities: altogether a high-quality business."

Martin Nußberger, polyform Industrie Design



# SYNERGY

## Applications and Examples

Data systems engineering, network technology, building services systems, safety engineering, medical and therapeutic applications, measurement and control technology, IoT/IIoT, gateways, sensors, optoelectronics, etc.



Access control system RFID



Battery filler for aviation batteries



CO2 traffic light



Electromagnetic impulse therapy with infrared light



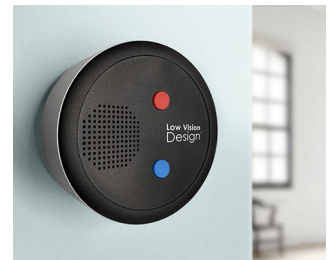
Individual room control panels



Industrial embedded system



Measuring system for creating metabolic profiles



Talking Thermostat



UHF RFID reader/writer



Ventilation system control



Wireless network access point

## View Customizing Options

What do you still need for your own very personal product? We can supply enclosures and tuning knobs with all necessary modifications for fitting your electronic components. Customizing options for Synergy

# SYNERGY



Machining



Printing



Laser marking



Decor foils



RFI/EMI shielding



Installation / Assembly  
of accessories

## Select Versions



**EE163059**  
SYNERGY E160  
Aluminum AlMgSi 0.5  
matt anodized  
6.30"x3.15"x1.57"  
IP 40



**EE166059**  
SYNERGY E160  
Aluminum AlMgSi 0.5  
matt anodized  
6.30"x3.15"x2.76"  
IP 40



**EE169059**  
SYNERGY E160  
Aluminum AlMgSi 0.5  
matt anodized  
6.30"x3.15"x3.94"  
IP 40



**EE183059**  
SYNERGY E180  
Aluminum AlMgSi 0.5  
matt anodized  
7.09"x3.54"x1.57"  
IP 40



**EE186059**  
SYNERGY E180  
Aluminum AlMgSi 0.5  
matt anodized  
7.09"x3.54"x2.76"  
IP 40



**EE189059**  
SYNERGY E180  
Aluminum AlMgSi 0.5  
matt anodized  
7.09"x3.54"x3.94"  
IP 40



**EE203059**  
SYNERGY E200  
Aluminum AlMgSi 0.5  
matt anodized  
7.87"x3.94"x1.57"  
IP 40



**EE206059**  
SYNERGY E200  
Aluminum AlMgSi 0.5  
matt anodized  
7.87"x3.94"x2.76"  
IP 40

# SYNERGY



**EE209059**  
SYNERGY E200  
Aluminum AlMgSi 0.5  
matt anodized  
7.87"x3.94"x3.94"  
IP 40



**EO163059**  
SYNERGY O160  
Aluminum AlMgSi 0.5  
matt anodized  
6.30"x3.15"x1.57"  
IP 40



**EO166059**  
SYNERGY O160  
Aluminum AlMgSi 0.5  
matt anodized  
6.30"x3.15"x2.76"  
IP 40



**EO169059**  
SYNERGY O160  
Aluminum AlMgSi 0.5  
matt anodized  
6.30"x3.15"x3.94"  
IP 40



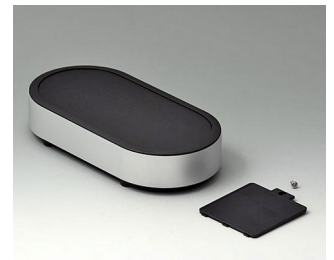
**EO183059**  
SYNERGY O180  
Aluminum AlMgSi 0.5  
matt anodized  
7.09"x3.54"x1.57"  
IP 40



**EO186059**  
SYNERGY O180  
Aluminum AlMgSi 0.5  
matt anodized  
7.09"x3.54"x2.76"  
IP 40



**EO189059**  
SYNERGY O180  
Aluminum AlMgSi 0.5  
matt anodized  
7.09"x3.54"x3.94"  
IP 40



**EO203059**  
SYNERGY O200  
Aluminum AlMgSi 0.5  
matt anodized  
7.87"x3.94"x1.57"  
IP 40



**EO206059**  
SYNERGY O200  
Aluminum AlMgSi 0.5  
matt anodized  
7.87"x3.94"x2.76"  
IP 40



**EO209059**  
SYNERGY O200  
Aluminum AlMgSi 0.5  
matt anodized  
7.87"x3.94"x3.94"  
IP 40



**ER103059**  
SYNERGY R100  
Aluminum AlMgSi 0.5  
matt anodized  
ø3.94"x1.57"  
IP 40



**ER106059**  
SYNERGY R100  
Aluminum AlMgSi 0.5  
matt anodized  
ø3.94"x2.76"  
IP 40



**ER109059**  
SYNERGY R100  
Aluminum AlMgSi 0.5  
matt anodized  
ø3.94"x3.94"  
IP 40



**ER123059**  
SYNERGY R120  
Aluminum AlMgSi 0.5  
matt anodized  
ø4.72"x1.57"  
IP 40



**ER126059**  
SYNERGY R120  
Aluminum AlMgSi 0.5  
matt anodized  
ø4.72"x2.76"  
IP 40



**ER129059**  
SYNERGY R120  
Aluminum AlMgSi 0.5  
matt anodized  
ø4.72"x3.94"  
IP 40

# SYNERGY



**ER143059**  
SYNERGY R140  
Aluminum AlMgSi 0.5  
matt anodized  
ø5.51"x1.57"  
IP 40



**ER146059**  
SYNERGY R140  
Aluminum AlMgSi 0.5  
matt anodized  
ø5.51"x2.76"  
IP 40



**ER149059**  
SYNERGY R140  
Aluminum AlMgSi 0.5  
matt anodized  
ø5.51"x3.94"  
IP 40



**ES103059**  
SYNERGY S100  
Aluminum AlMgSi 0.5  
matt anodized  
3.94"x3.94"x1.57"  
IP 40



**ES106059**  
SYNERGY S100  
Aluminum AlMgSi 0.5  
matt anodized  
3.94"x3.94"x2.76"  
IP 40



**ES109059**  
SYNERGY S100  
Aluminum AlMgSi 0.5  
matt anodized  
3.94"x3.94"x3.94"  
IP 40



**ES123059**  
SYNERGY S120  
Aluminum AlMgSi 0.5  
matt anodized  
4.72"x4.72"x1.57"  
IP 40



**ES126059**  
SYNERGY S120  
Aluminum AlMgSi 0.5  
matt anodized  
4.72"x4.72"x2.76"  
IP 40



**ES129059**  
SYNERGY S120  
Aluminum AlMgSi 0.5  
matt anodized  
4.72"x4.72"x3.94"  
IP 40



**ES143059**  
SYNERGY S140  
Aluminum AlMgSi 0.5  
matt anodized  
5.51"x5.51"x1.57"  
IP 40



**ES146059**  
SYNERGY S140  
Aluminum AlMgSi 0.5  
matt anodized  
5.51"x5.51"x2.76"  
IP 40



**ES149059**  
SYNERGY S140  
Aluminum AlMgSi 0.5  
matt anodized  
5.51"x5.51"x3.94"  
IP 40

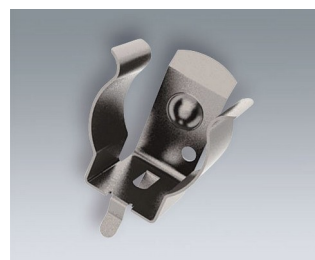
## Accessory "battery"



**A9193033**  
Polarity reversal protection  
device, positive terminal AA  
ABS (UL 94 HB)  
off-white RAL 9002



**A9193034**  
Polarity reversal protection  
device, positive terminal AAA  
ABS (UL 94 HB)  
off-white RAL 9002

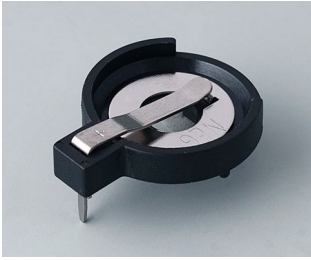


**A9193035**  
Battery clip, AA  
Steel  
nickel-plated



**A9193036**  
Battery clip, AAA  
Steel  
nickel-plated

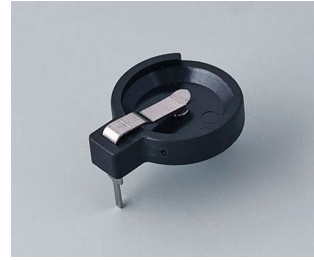
# SYNERGY



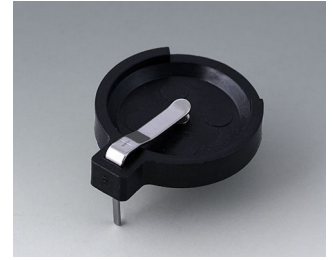
**A9193037**  
Button cell holder, Ø 0.787"



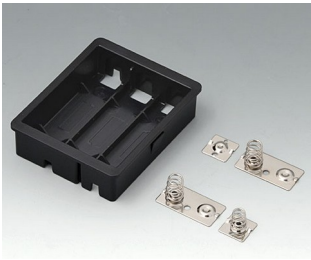
**A9193038**  
Button cell holder, Ø 0.906"



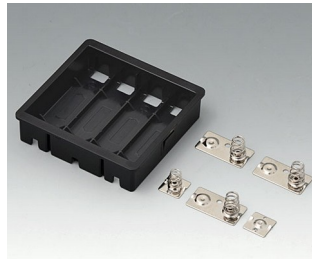
**A9193039**  
Button cell holder, Ø 0.472"



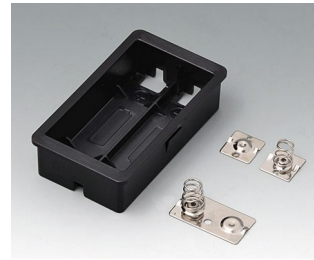
**A9193040**  
Button cell holder, Ø 0.630"



**EZ040609**  
Battery compartment, 3 x AA  
ASA+PC (UL 94 V-0)  
black RAL 9005

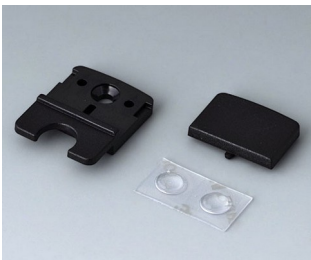


**EZ050609**  
Battery compartment, 4 x AA  
ASA+PC (UL 94 V-0)  
black RAL 9005



**EZ060609**  
Battery compartment, 2 x AA  
ASA+PC (UL 94 V-0)  
black RAL 9005

## Accessory "wall/holder"



**EZ030109**  
Wall suspension element  
ASA+PC (UL 94 V-0)  
black RAL 9005

## Accessory "screws"



**A0305031**  
Self-tapping screws 0.098" x  
0.236" (PZ1)



**EZ031209**  
Extender kit  
ASA+PC (UL 94 V-0)  
black RAL 9005

Subject to technical modification without notice. © by OKW Gehäusesysteme, Buchen/Germany.